



# PLA Series

Powerline Ethernet Adapters

PLA4101, PLA4111, PLA4201, PLA4201 v2, PLA5205, PLA5215,  
PLA5206, PLA5405

Utility Version 7.0.1

Edition 1, 05/2014

Default Network Name: HomePlugAV

## User's Guide

---

**IMPORTANT!**

**READ CAREFULLY BEFORE USE.**

**KEEP THIS GUIDE FOR FUTURE REFERENCE.**

Note: This guide is a reference for a series of products. Therefore some features or options in this guide may not be available in your product.

Screenshots and graphics in this book may differ slightly from your product due to differences in your product firmware or your computer operating system. Every effort has been made to ensure that the information in this manual is accurate.

### **Related Documentation**

- Quick Start Guide

The Quick Start Guide is designed to help you get up and running right away. It contains information on making your hardware connections.

# Table of Contents

<b>Table of Contents .....</b>	<b>3</b>
<b>Part I: User's Guide .....</b>	<b>5</b>
<b>Chapter 1</b>	
<b>Introducing the PLA .....</b>	<b>7</b>
1.1 Overview .....	7
1.2 LEDs .....	8
1.3 Standby Mode (Power Saving Mode) .....	10
1.4 Ways to Manage the PLA .....	10
1.5 Expand Your Network with the PLA .....	10
1.6 Security .....	11
1.6.1 Passwords .....	12
1.6.2 Setting Up Security .....	12
1.7 Multiple Networks .....	12
<b>Chapter 2</b>	
<b>The RESET/ENCRYPT Button.....</b>	<b>14</b>
2.1 RESET/ENCRYPT Button Overview .....	14
2.2 Adding Devices to a Powerline Network .....	14
2.3 Removing a Device from a Powerline Network .....	16
2.4 Multiple Separate Powerline Networks .....	17
2.5 PLAs With One Combination RESET/ENCRYPT Button .....	17
2.6 PLAs with Separate RESET and ENCRYPT Buttons .....	18
2.6.1 ENCRYPT Button Behavior .....	18
2.6.2 RESET Button Behavior .....	19
<b>Part II: Technical Reference.....</b>	<b>20</b>
<b>Chapter 3</b>	
<b>Installing the Utility.....</b>	<b>22</b>
3.1 Windows .....	22
3.1.1 System Requirements .....	22
3.1.2 Installing the Utility .....	22
3.2 Macintosh (Mac) .....	28
3.2.1 Supported OSs .....	28

3.2.2 Installing the Utility .....	28
<b>Chapter 4</b>	
<b>The Configuration Utility .....</b>	<b>31</b>
4.1 Overview .....	31
4.1.1 Powerline Network Security .....	31
4.1.2 Device Access Key (DAK) .....	32
4.2 Starting the Configuration Utility .....	32
4.3 Network Info Screen .....	32
4.3.1 Icon View .....	33
4.3.2 List View .....	34
4.4 Configuration Screen .....	36
4.5 Advanced Screen .....	37
4.6 About Screen .....	40
<b>Chapter 5</b>	
<b>Powerline Network Setup Tutorial.....</b>	<b>41</b>
5.1 Overview .....	41
5.2 Important Terms .....	41
5.3 Accessing Your Powerline Adapter .....	42
5.4 Adding a Powerline Adapter .....	42
5.5 Setting Up a New Network with a New Adapter .....	44
5.6 Splitting a Network into Two Networks .....	46
5.7 Troubleshooting .....	48
<b>Chapter 6</b>	
<b>Troubleshooting.....</b>	<b>49</b>
6.1 Power and Light Problems .....	49
6.2 Configuration Utility Problems .....	50
6.3 Powerline Problems .....	51
6.4 RESET/ENCRYPT Button Problems .....	51
Appendix A Customer Support .....	54
Appendix B Legal Information.....	60
<b>Index .....</b>	<b>64</b>

---

# **PART I**

## **User's Guide**

---



# Introducing the PLA

## 1.1 Overview

This chapter introduces the main applications and features of your ZyXEL HomePlug AV compliant powerline adapter, which is called "PLA" in this guide. The following generic icon is used to represent all PLA models.



In this User's Guide the electrical wiring network is referred to as the "powerline network". The HomePlug AV standard specifies how network devices communicate using standard electrical wiring.

This User's Guide covers the following models:

**Table 1** PLA Comparison Table 1

PORT/FEATURE	PLA4101	PLA4111	PLA4201	PLA4201 V2	PLA5205	PLA5215
One 10/100 Base-T Ethernet port	✓	✓	✓	✓		
One Gigabit Ethernet port					✓	✓
AC Pass-Through		✓				✓
Reset/Encrypt Button	✓	✓	✓	✓		
Reset Button					✓	✓
Encrypt Button					✓	✓
Maximum PHY Rate over Powerline	200 Mbps	200 Mbps	500 Mbps	500 Mbps	600 Mbps	600 Mbps

**Table 2** PLA Comparison Table 2

PORT/FEATURE	PLA5206	PLA5405				
One 10/100 Base-T Ethernet port						
One Gigabit Ethernet port	✓	✓				
AC Pass-Through						
Reset/Encrypt Button	✓	✓				
Reset Button						
Encrypt Button						
Maximum PHY Rate over Powerline	900 Mbps	1200 Mbps				

Note: In this guide **RESET/ENCRYPT** refers to the **ENCRYPT** button in PLAs that have separate **RESET** and **ENCRYPT** buttons.

You can directly plug an electrical device (such as a router or computer) into PLAs with an AC power pass-through socket to supply power to the device.

There are two types of hardware for each of the PLA4101 and PLA4201 v2 models:

- One has an Ethernet port on the top and a power plug at the bottom of the rear panel.
- One has an Ethernet port on the bottom and a power plug at the top of the rear panel.

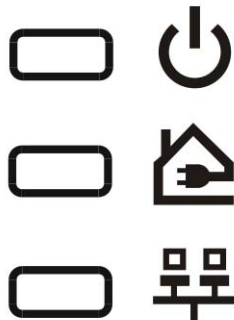
The power plug varies depending on your region.

## 1.2 LEDs

The following sections describes the lights on the PLA.


The following figure is the front panel of the PLA. Use the lights to determine if the PLA is behaving normally or if there are some problems on your powerline network.

**Figure 1** PLA Lights





The following table describes the behavior of the lights on the PLA.

**Table 3** LEDs: 200 Mbps Models




LIGHTS	ICON	COLOR	STATUS	DESCRIPTION
POWER		Green	On	The PLA is on and receiving power. It also indicates a successful connection using the <b>RESET/ENCRYPT</b> button.
			Blinking	It indicates the PLA is trying to connect with another device using the ENCRYPT function. The <b>Power</b> LED blinks when it is in standby mode. Refer to <a href="#">Section 1.3 on page 10</a> for details on this feature.
			Off	The PLA is not receiving power.



**Table 3** LEDs: 200 Mbps Models (continued)

LIGHTS	ICON	COLOR	STATUS	DESCRIPTION
HomePlug		Green	On	The PLA detects another powerline adapter. The data transfer rate is greater than 40 Mbps.
		Amber		The PLA detects another powerline adapter. The data transfer rate is between 12–40 Mbps.
		Red		The PLA detects another powerline adapter. The data transfer rate is between 0–12 Mbps.
		Green/ Amber/ Red	Blinking	The PLA is communicating with another powerline adapter. Data is being transmitted and/or received.
			Off	The HomePlug port does not detect another powerline adapter.
ETHERNET		Green	On	The ETHERNET port is on and ready and the PLA detects a device connected to it.
			Blinking	The PLA is communicating with a networking device connected to it.
			Off	The PLA does not detect any devices connected to its ETHERNET port.

**Table 4** LEDs: 500 / 600 / 900 / 1200 Mbps Models

LIGHTS	ICON	COLOR	STATUS	DESCRIPTION
POWER		Green	On	The PLA is on and receiving power.  It also indicates a successful connection using the <b>RESET/ ENCRYPT</b> button.
			Blinking	It indicates the PLA is trying to connect with another device using the ENCRYPT function.  The <b>Power</b> LED blinks when it is in standby mode. Refer to <a href="#">Section 1.3 on page 10</a> for details on this feature.
			Off	The PLA is not receiving power.
HomePlug		Green	On	The PLA detects another powerline adapter. The data transfer rate is greater than 80 Mbps.
		Amber		The PLA detects another powerline adapter. The data transfer rate is between 20–80 Mbps.
		Red		The PLA detects another powerline adapter. The data transfer rate is between 0–20 Mbps.
		Green/ Amber/ Red	Blinking	The PLA is communicating with another powerline adapter. Data is being transmitted and/or received.
			Off	The HomePlug port does not detect another powerline adapter.
ETHERNET		Green	On	The ETHERNET port is on and ready and the PLA detects a device connected to it.
			Blinking	The PLA is communicating with a networking device connected to it.
			Off	The PLA does not detect any devices connected to its ETHERNET port.

## 1.3 Standby Mode (Power Saving Mode)

Your PLA is a certified green product. It goes into standby mode when there is no Ethernet connection.

When you plug the PLA into an electric socket, it waits for an Ethernet connection. When no connection is detected after sixty (60) seconds, the Power LED blinks indicating that it is going into standby mode.

The same process occurs when you disconnect the PLA from a previously working Ethernet connection. Sixty (60) seconds after disconnecting the Ethernet cable, the PLA's power LED blinks signalling that it is going into standby mode.

The Ethernet and HomePlug LEDs are turned off in standby mode.

While in standby mode, you cannot use the **RESET/ENCRYPT** button. To enable the **RESET/ENCRYPT** button again, you have to connect the PLA's Ethernet cable to a computer/notebook or modem/router first. The PLA wakes up from standby mode and you can start using the **RESET/ENCRYPT** button.

## 1.4 Ways to Manage the PLA

Use the **RESET/ENCRYPT** button to add powerline devices to your powerline network if they have this button. See [Chapter 2 on page 14](#) for instructions on using the ENCRYPT feature.

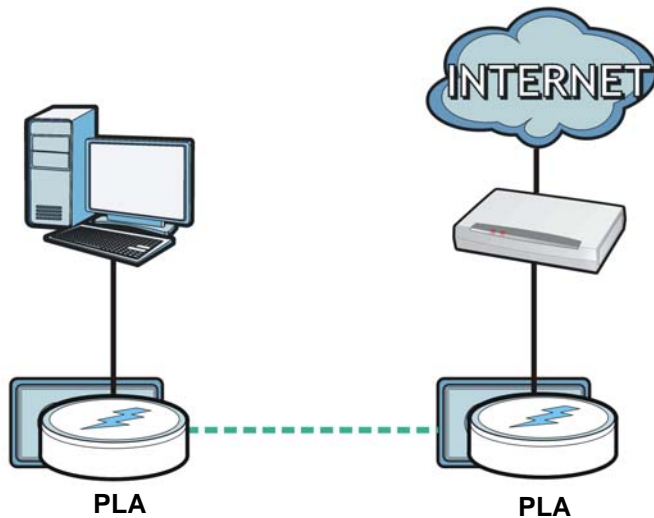
Use the **ZyXEL PLA Series Configuration** utility (or utility, for short) to manage the PLA. See [Chapter 3 on page 22](#) for instructions on installing the utility.

## 1.5 Expand Your Network with the PLA

The PLA plugs into an ordinary power outlet to easily extend a cable or DSL broadband connection or existing Ethernet (LAN) network to any other electrical outlet in any room of a house, all without the need for any new cabling. Devices can securely communicate with each other at high data

transfer rates. The PLA uses 128-bit Advanced Encryption Standard (AES) to ensure safe transfer of information.

**Figure 2** Expand Your Network with the PLA



Connect your PLA to an Internet gateway such as a modem and plug it into an ordinary power outlet in your home. Plug a second PLA into another power outlet and connect a computer to the PLA for Internet access. Your network can be further expanded by plugging additional PLAs into other outlets in your home and connecting other computers or network devices (for example, a printer) to them.

Refer to your Quick Start Guide for hardware connection information.

## 1.6 Security

Since your powerline network may extend outside your premises, it is important to set up security on your PLA.

## 1.6.1 Passwords

You use two types of passwords in the HomePlug AV powerline network. The following table describes the differences between the passwords.

**Table 5** Password Summary

PASSWORD	DESCRIPTION
Network Name	All powerline adapters that follow the HomePlug AV standard are shipped with the same powerline network name "HomePlugAV". Change the network name via the <b>ZyXEL PLA Series Configuration</b> utility or <b>RESET/ENCRYPT</b> button to create a private network. See <a href="#">Section 4.4 on page 36</a> .
DAK (Data Access Key) Password	In order to manage the powerline adapters on your powerline network you must enter the adapters' DAK password in the <b>ZyXEL PLA Series Configuration</b> utility. This password is printed on the powerline adapter itself.  You don't need to add the password for the powerline adapter directly connected to the computer running the configuration utility (local powerline adapter), you only have to add the remote powerline adapters' passwords (those on your circuit, but not directly connected to your computer).

## 1.6.2 Setting Up Security

The ENCRYPT feature automatically sets up security on your powerline network. Use this feature if your powerline devices have the **RESET/ENCRYPT** button.

Alternatively, use the **ZyXEL PLA Series Configuration** utility to set up security on the PLA. Although the PLA is a "plug-and-play" network expanding solution there are several reasons for enabling security on the powerline network in your home.

- 1 It's easy and only requires you to change a network name.
- 2 It's a good idea to ensure privacy of your communication. When you use the PLA and other powerline adapters, the electrical wiring in your home becomes an extension of your Ethernet network. Your network traffic flows freely within the electrical circuit of your home and is bounded in most cases by a power meter.

Without security (encryption) your information is accessible to anyone using a powerline adapter on the same electrical circuit. In some cases, a circuit can be shared by more than one household.

To prevent compromising your network security, you can create a private network. A private network uses a secret password (**Network Name**) to make sure that only permitted powerline adapters can communicate in your network. See [Section 4.4 on page 36](#) for information on setting up a private network.

- 3 You may need to change the **Network Name** to create multiple powerline networks. See the next section for more information on how to set up a multiple network.

## 1.7 Multiple Networks

Multiple powerline networks can coexist on a single powerline circuit. You might want to implement multiple powerline networks in a small office environment where you have two separate Ethernet networks.

- 1 Connect one powerline adapter to a router or switch on the first Ethernet network and assign a **Network Name** (for example "Password1") to this powerline adapter. Add additional powerline adapters to your network by plugging them into your powerline outlets and assigning them "Password1". This completes the configuration of your first powerline network.
- 2 Connect another powerline adapter to a router or switch on the second Ethernet network and assign a different **Network Name** (for example "Password2") to this powerline adapter. Again, add additional powerline adapters and assign them "Password2".

You now have two private networks on your powerline circuit. Information is not shared between the two networks as only powerline adapters with the same **Network Name** can communicate with each other.

# The RESET/ENCRYPT Button

Use the **RESET/ENCRYPT** button to automatically set up a secure powerline connection between your powerline devices.

Note: In this guide **RESET/ENCRYPT** refers to the **ENCRYPT** button in PLAs that have separate **RESET** and **ENCRYPT** buttons.

## 2.1 RESET/ENCRYPT Button Overview

The **RESET/ENCRYPT** button allows you to set up a secure powerline connection with other HomePlug AV compliant powerline devices which also support the ENCRYPT feature. No other powerline setting changes are required to connect.

You can use the **RESET/ENCRYPT** button to:

- set up a new powerline network.
- separate an existing powerline network into multiple networks.
- reset the PLA to the factory defaults.

## 2.2 Adding Devices to a Powerline Network

You can connect a number of PLAs on a powerline network, but you can use the **RESET/ENCRYPT** button on only two PLAs at a time.

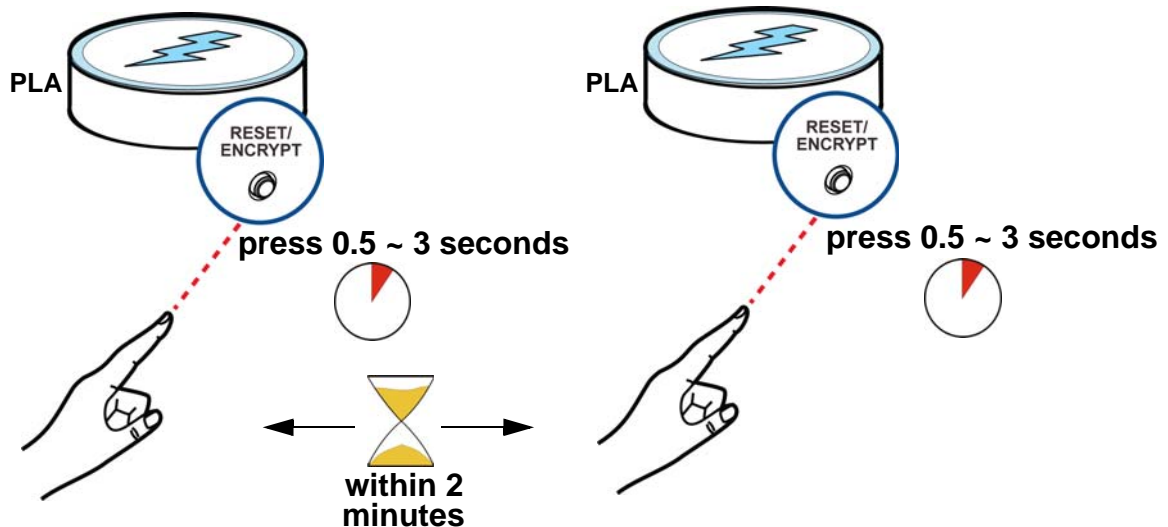
Place a powerline device close to another powerline device so you have time to set up each one. After you set up the first powerline device, you have 120 seconds to set up the second powerline device.

Note: Your PLA must be connected to a networking equipment for the **RESET/ENCRYPT** button to work. Refer to [Section 1.3 on page 10](#) for more details.

Follow the steps below to set up your HomePlug AV Network:

- 1 Press the **RESET/ENCRYPT** button at the side of your powerline device for 0.5 to 3 seconds. The power (🔌) light will blink as the powerline device tries to set up a connection with a new random network name.

**Figure 3** ENCRYPT Connection Procedure



Note: The **RESET/ENCRYPT** button's location varies for each Powerline model.

Note: Check the lights on the two powerline devices. The power (🔌) and HomePlug (🏠) lights should be on while the devices are connecting. Wait for about two minutes while your powerline devices connect.

---

If the power (🔌) light does not blink when you press **RESET/ENCRYPT**, you have probably pressed the **RESET/ENCRYPT** button for too long. Try again, pressing the **RESET/ENCRYPT** button for 0.5 to 3 seconds.

---



---

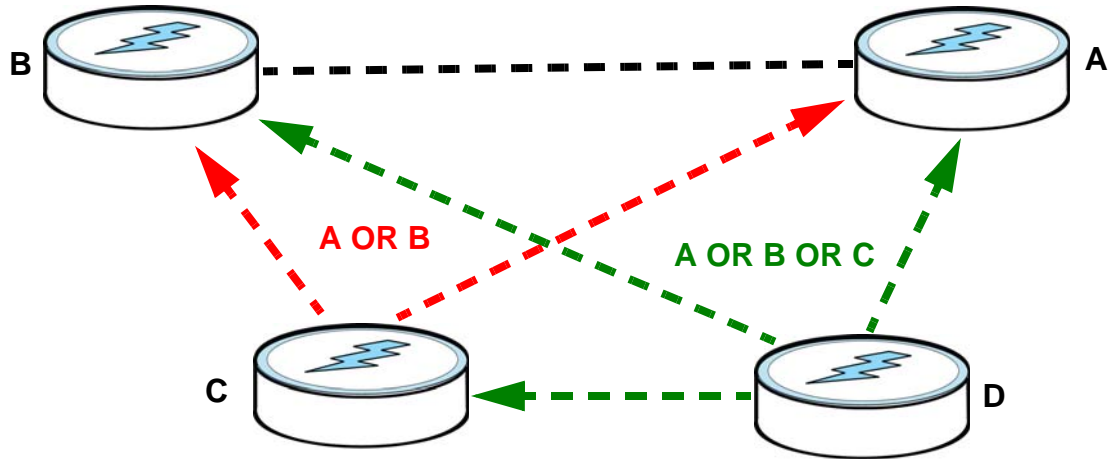
If the HomePlug (🏠) lights on both powerline devices do not light up, the powerline devices are not connected. Repeat step 1 in this section. If that doesn't work, see the Troubleshooting in Section 6.4 on page 51 for suggestions.

---

- 2 To add more powerline devices to your network, use any powerline device (**A** or **B**) you have connected to set up a connection with the powerline devices you want to connect (**C** and **D**).
- 3 Press the **RESET/ENCRYPT** button on both powerline devices (**A** and **C**, or **B** and **C**) for 0.5 to 3 seconds to add powerline device **C**. This must be done within 2 minutes (120 seconds) of pressing the **RESET/ENCRYPT** button on the PLA.

- 4 Press the **RESET/ENCRYPT** button on both powerline devices (**A** and **D**, **B** and **D** or **C** and **D**) for 0.5 to 3 seconds to add powerline device **D**. This must be done within 2 minutes (120 seconds) of pressing the **RESET/ENCRYPT** button on the PLA.

**Figure 4** Adding More Powerline Adapters to Your Network

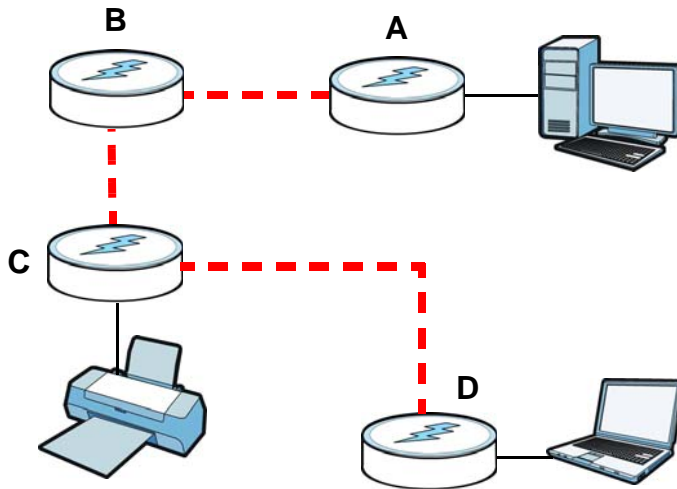


This sets up your powerline network between your powerline devices.

## 2.3 Removing a Device from a Powerline Network

Suppose you want to remove PLAs (**C**) and (**D**) from the following powerline network.

**Figure 5** Removing Devices From an Existing Powerline Network



- 1 Press the **RESET/ENCRYPT** button on powerline device **C** for 5 to 8 seconds and then release it. This disconnects **C** from the current network.
- 2 Press the **RESET/ENCRYPT** button on powerline device **D** for 5 to 8 seconds and then release it. This disconnects **D** from the current network.

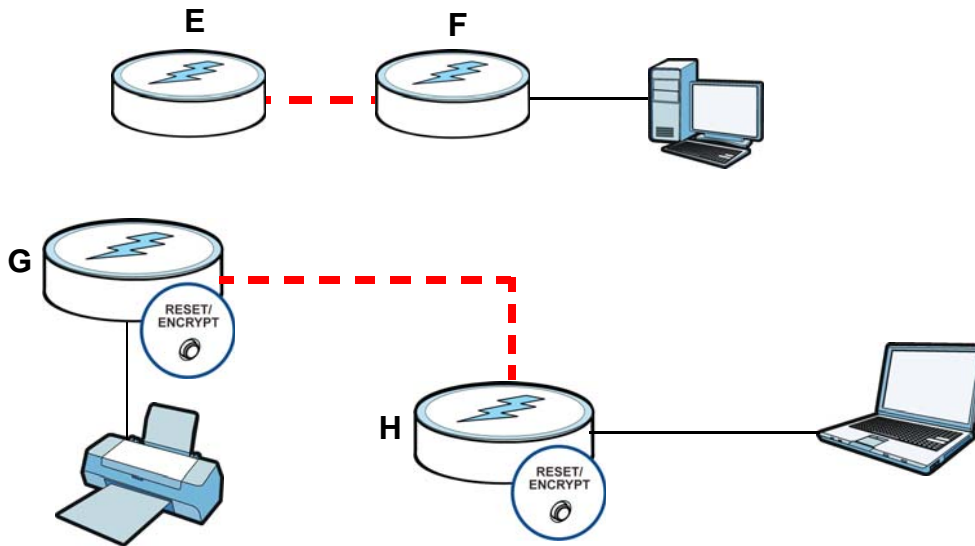


## 2.4 Multiple Separate Powerline Networks

You can use the **RESET/ENCRYPT** button to create multiple separate powerline networks. Use the **RESET/ENCRYPT** button on only two PLAs at a time.

- 1 Press the **RESET/ENCRYPT** button on powerline devices **E** and **F** for 0.5 to 3 seconds. This must be done within 2 minutes (120 seconds) of pressing the **RESET/ENCRYPT** button on the first PLA.
- 2 Wait for about one minute while powerline devices **E** and **F** connect.
- 3 Now pair two different PLAs. Press the **RESET/ENCRYPT** button on powerline devices **G** and **H** for 0.5 to 3 seconds and within two minutes of each other.
- 4 Wait for about one minute while powerline devices **G** and **H** connect.
- 5 When the power (🔌) and HomePlug (🏠) lights shine steadily, the devices are connected.

**Figure 6** Two Separate Powerline Networks



If the HomePlug (🏠) lights on both powerline devices do not light up, the powerline devices are not connected. Repeat the connection process, making certain you press the **RESET/ENCRYPT** buttons for the correct time and within two minutes of each other. If that does not work see Section 6.4 on page 51 for suggestions.

## 2.5 PLAs With One Combination RESET/ENCRYPT Button

Refer to [Table 1 on page 7](#) to see which models have a combination **RESET /ENCRYPT** button.

The following table summarizes the actions that occur when the **RESET/ENCRYPT** button is pressed for specific lengths of time.

**Table 6 RESET/ENCRYPT**

TIME	ACTION	POWER LIGHT BEHAVIOR	HOMEPLUG LIGHT BEHAVIOR
0.5 to 3 seconds	Create a powerline network with a new random network name.  Join an existing powerline network by sharing the same network name as other devices on the network.	The power (🔌) light blinks until the device is connected. This may take a minute.	The HomePlug (🏠) light turns on if your device is connected to another powerline device or a powerline network.
5 to 8 seconds	Remove the device from any network it is associated with and its network name assumes a random value.	The power (🔌) light blinks and then shines steadily.	The HomePlug (🏠) light turns off when it disconnects from the powerline network.
10 to 15 seconds	Clear all user-entered configuration information and return the device to its factory defaults.	The power (🔌) light blinks and then shines steadily.	The HomePlug (🏠) light turns off when it disconnects from the powerline network.

Note: The network name is unknown when you use the **RESET/ENCRYPT** button.

## 2.6 PLAs with Separate RESET and ENCRYPT Buttons

Refer to [Table 1 on page 7](#) to see which models have separate **RESET** and **ENCRYPT** buttons.

### 2.6.1 ENCRYPT Button Behavior

The following table summarizes the actions that occur when the **ENCRYPT** button is pressed for specific lengths of time.

**Table 7 ENCRYPT**

TIME	ACTION	POWER LIGHT BEHAVIOR	HOMEPLUG LIGHT BEHAVIOR
less than 3 seconds	Create a powerline network with a new random network name.  Join an existing powerline network by sharing the same network name as other devices on the network.	The power (🔌) light blinks until the device is connected. This may take a minute.	The HomePlug (🏠) light turns on if your device is connected to another powerline device or a powerline network.
more than 10 seconds	Remove the device from any network it is associated with and its network name assumes a random value.	The power (🔌) light blinks and then shines steadily.	The HomePlug (🏠) light blinks red one time and then turns off when it disconnects from the powerline network.

## 2.6.2 RESET Button Behavior

Use a pointed device such as a pin to reset the **Network Name** back to default **HomePlugAV**.

**Table 8** RESET Button

TIME	ACTION	POWER LIGHT BEHAVIOR	HOMEPLUG LIGHT BEHAVIOR
1 to 3 seconds	Clear all user-entered configuration information and return the device to its factory defaults.	The power (⏻) light blinks and then shines steadily.	The HomePlug (🏠) light turns off when it disconnects from the powerline network.

See Troubleshooting in [Chapter 6 on page 51](#) for suggestions on problems with the **RESET/ENCRYPT** button and the lights.

---

# **PART II**

## **Technical Reference**

---



# Installing the Utility

This chapter guides you through the installation of the configuration utility for your PLA.

## 3.1 Windows

This section uses the Windows XP screens as an example to show you how to install the Windows version of the **ZyXEL PLA Series Configuration** utility.

### 3.1.1 System Requirements

At the time of writing, the **ZyXEL PLA Series Configuration** utility is compatible with:

- Windows XP (32-bit version)
- Windows XP (64-bit version)
- Windows Vista (32-bit version)
- Windows Vista (64-bit version)
- Windows 7 (32-bit version)
- Windows 7 (64-bit version)
- Windows 8 (32-bit version)
- Windows 8 (64-bit version)

Note: To check for your Windows operating system version, right-click on **My Computer** > **Properties**. You should see this information in the **General** tab.

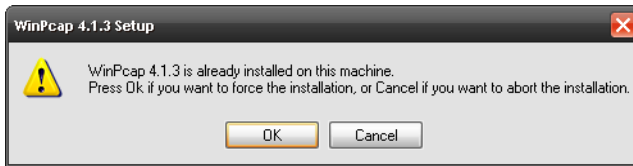
Microsoft's .NET Framework version 4 and WinPcap 4.1.3 software are necessary for the installation of the **ZyXEL PLA Series Configuration** utility. The utility automatically installs WinPcap 4.1.3 and .NET Framework version 4 on all supported operating systems (if it's not already installed on your computer).

### 3.1.2 Installing the Utility

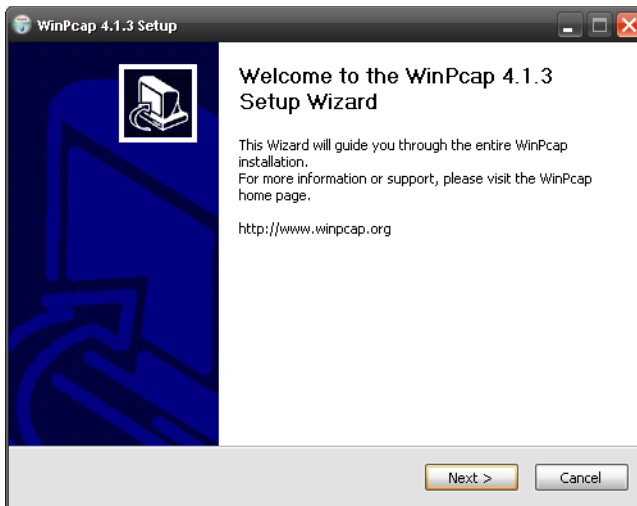
Follow the steps below to install WinPcap 4.1.3, .NET Framework version 4 and the **ZyXEL PLA Series Configuration** utility on your computer.

- 1 Insert the included CD into your computer's CD-ROM drive. The setup utility runs automatically. Alternatively this can also be done manually by double clicking the **setup.exe** file on the CD.

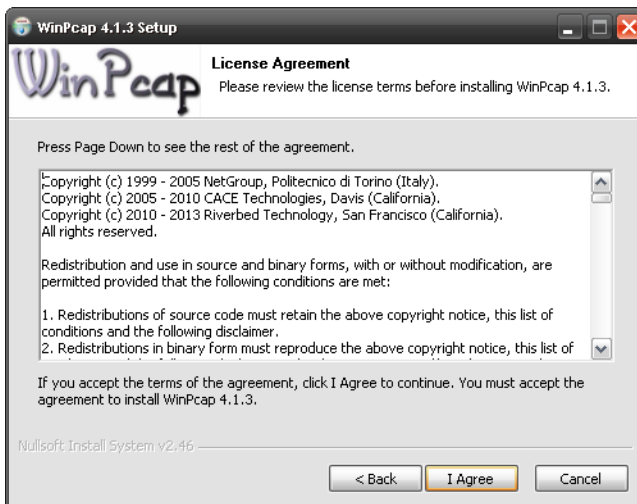
If WinPcap 4.1.3 is already installed on your computer, the following screen appears. Click **Cancel** and go to step 5.



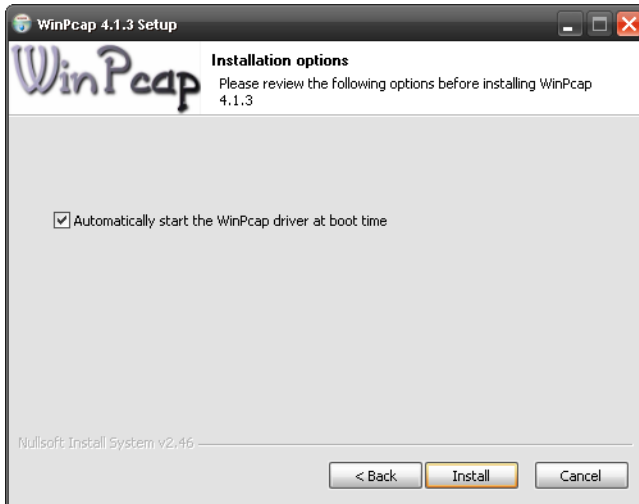
Otherwise, the WinPcap setup wizard runs automatically. Click **Next** to continue.



- 2 Review the **license agreement**, and click **I Agree** to proceed.



- 3 Select **Automatically start the WinPcap driver at boot time** if you want to start WinPcap automatically when the computer boots. Click **Install** to install WinPcap.



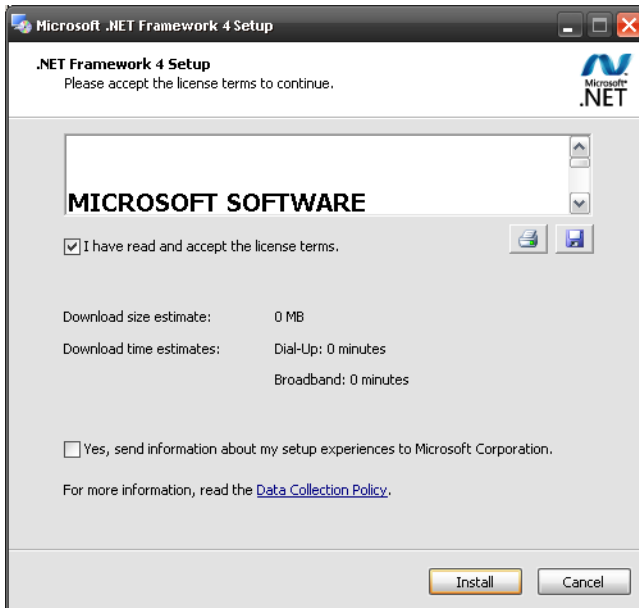
- 4 Select **I want to manually reboot later**, and click **Finish** to exit the wizard.



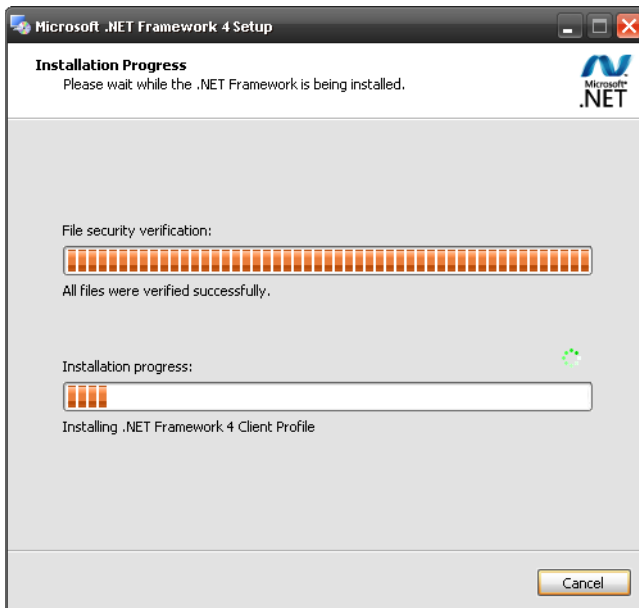
- 5 A prompt appears asking you to install the .NET Framework version 4. Review Microsoft's **License Agreement**, select **I have read and accept the license terms**, and click **Install** to proceed.



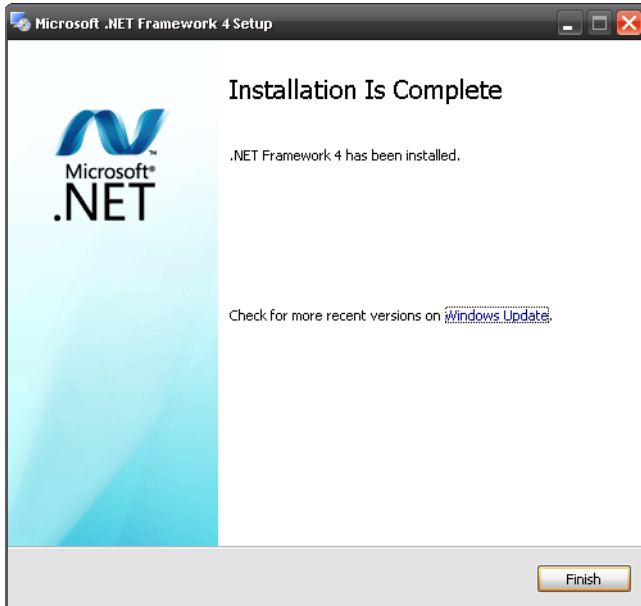
Note: If you already have .NET Framework version 4 installed on your computer this step can be skipped.



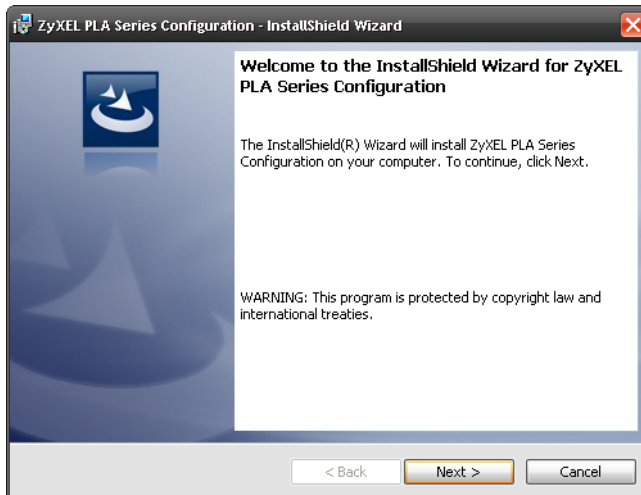
- 6 The next screen allows you to see the progress of the installation.



- 7 Click **Finish** to close the window.

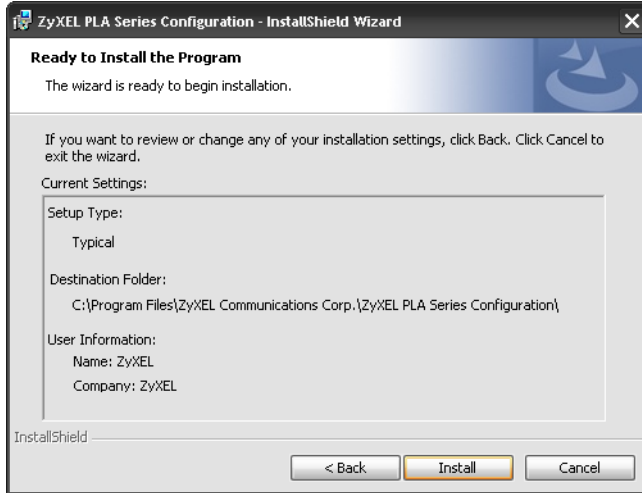


- 8 The utility installation wizard runs automatically. Click **Yes** or **Next** to continue through the initial screen. Click **Cancel** only if you want to abort the installation.



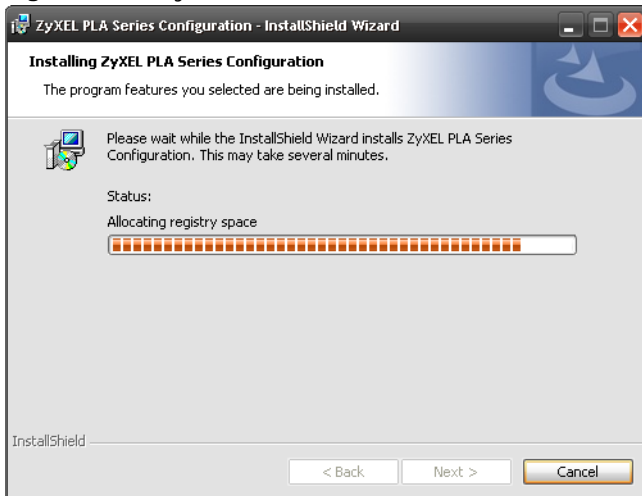
- 9 Click **Install** to install the utility to the default folder.

**Figure 7** Install Destination Folder



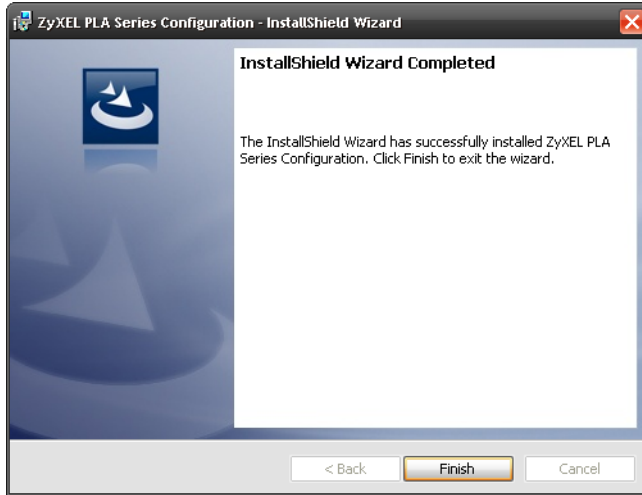
- 10 The screen shows you the progress of the installation.

**Figure 8** Utility Installation Process



- 11 Click **Finish** to exit the wizard.

**Figure 9** Installation Complete



Note: You may be asked to restart your computer when the installation is complete. Click "Yes" to restart your computer. If you select "No, I will restart my computer later", you will not be able to launch the utility until after a restart of your computer.

## 3.2 Macintosh (Mac)

This section uses the Mac OS X 10.8 screens as an example to show you how to install the Mac version of the **ZyXEL PLA Series Configuration** utility.

### 3.2.1 Supported OSs

At the time of writing, the following Mac operating systems support the **ZyXEL PLA Series Configuration** utility:

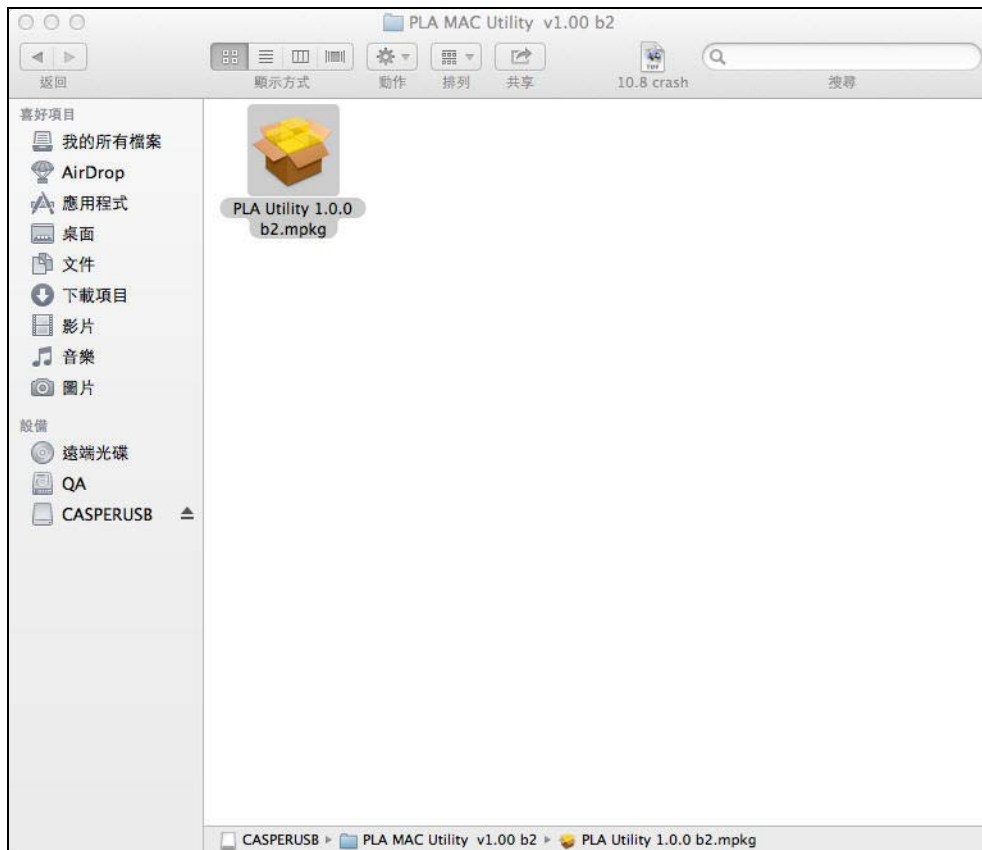
- Mac OS X 10.6
- Mac OS X 10.7
- Mac OS X 10.8

### 3.2.2 Installing the Utility

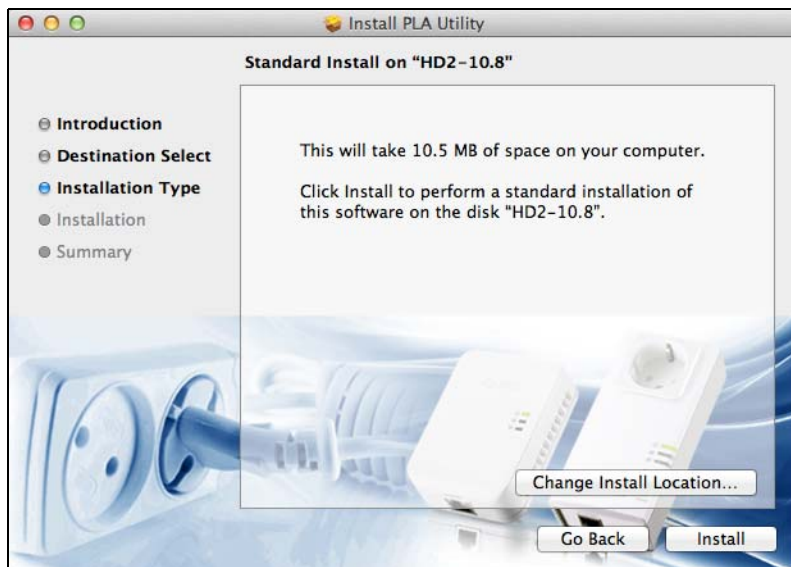
Follow the steps below to install the **ZyXEL PLA Series Configuration** utility on your Mac computer.

- 1 Insert the included CD into your computer's CD-ROM drive.

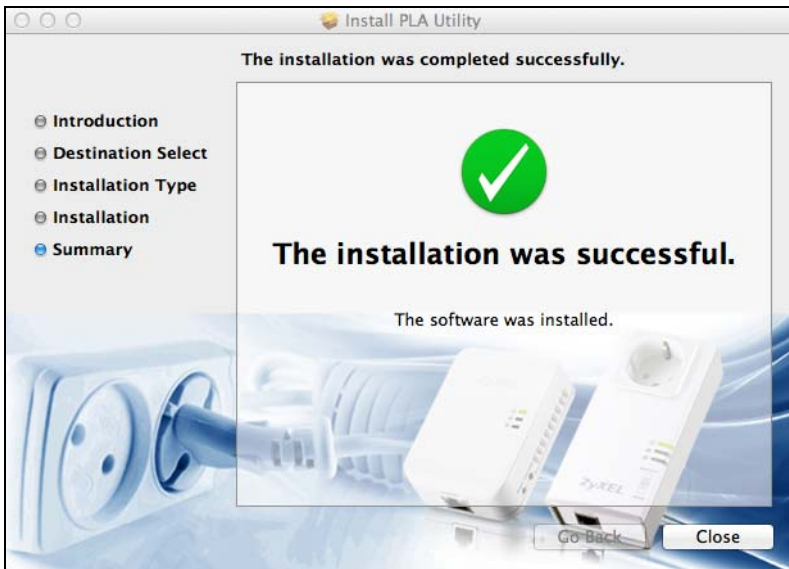
- 2 Double-click the **PLA Utility 1.0.0.mpkg** file on the CD to run the installation program. When it opens, follow the on-screen instructions.



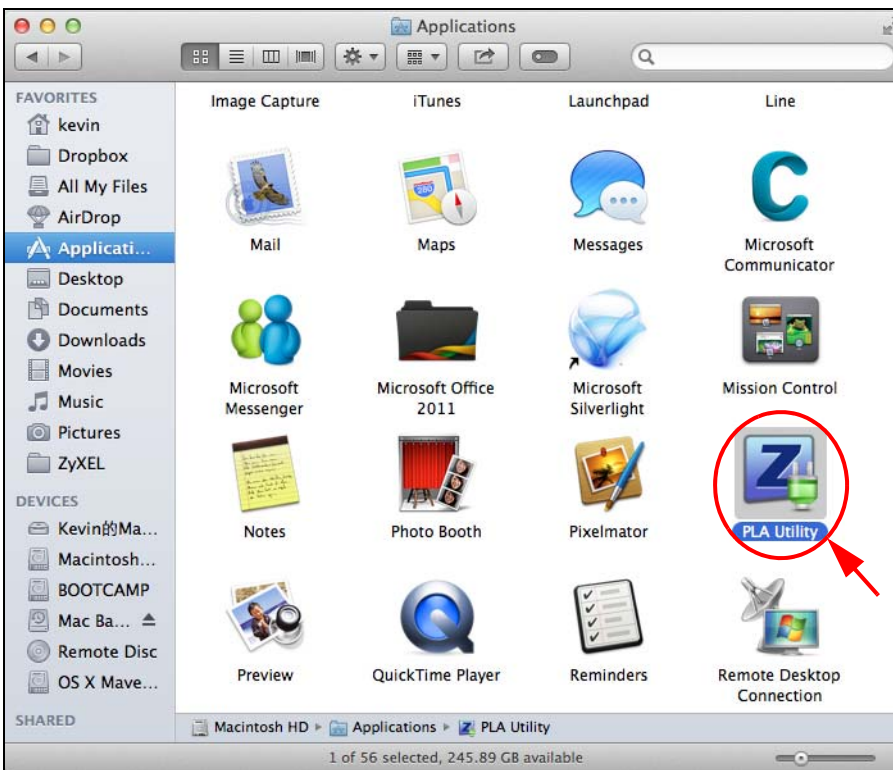
- 3 Click **Install** to install the utility to the default folder, or click **Change Install Location ...** to specify a different location on your computer.



- When the installation is finished, a screen appears to confirm the **PLA Series Configuration Utility** has been successfully installed to your computer. Click **Close**.



- After installing the utility, you can find the utility icon in your **Applications** folder.



If you are running Mac OS X 10.7 or later, you can also see the utility icon in the **Launchpad** screen.

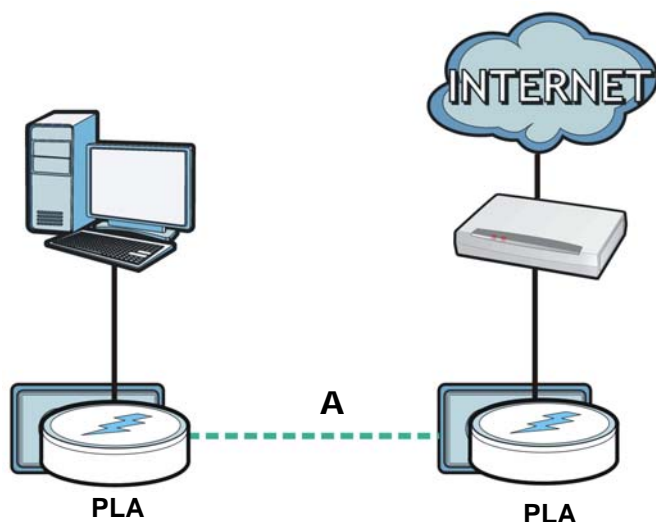
# The Configuration Utility

## 4.1 Overview

This chapter shows you how to use the **ZyXEL PLA Series Configuration** utility (or utility) to secure, manage and set up Quality of Service (QoS) on your powerline network.

The PLA is designed as a plug-and-play network expanding solution. This means that once you complete your hardware connections, the PLAs in your network (without additional configuration) are able to communicate with each other by sending and receiving information over your home's electrical wiring (**A**).

**Figure 10** Example Network Setup



All HomePlug AV compliant powerline adapters within range can join your network. The range varies depending on the quality of your home's wiring.

See [Section 4.1.1 on page 31](#) for more information on enhancing your powerline network security.

Note: It is recommended to use the **ZyXEL PLA Series Configuration** with PLA5206 independently.

### 4.1.1 Powerline Network Security

When the PLAs communicate with each other, they use encryption to protect the information that is sent in the powerline network. Encryption is like a secret code. If you do not know the secret code, you cannot understand the message. The HomePlug AV standard uses 128-bit AES (Advanced Encryption Standard) to safely transmit data between powerline adapters.

For the powerline adapters to communicate with each other they all need to use the same network name. This network name allows the powerline adapters to understand the encrypted information sent in the powerline network.

By default the PLAs are all configured with the network name **HomePlugAV**, this allows you to simply plug the devices in and not worry about setting up security. If you want to enhance the security on your powerline network, you can change the network name on the powerline adapters you want to allow to communicate in your powerline network.

### 4.1.2 Device Access Key (DAK)

In order to manage the powerline adapters on your powerline network you must enter the adapters' password in the **ZyXEL PLA Series Configuration** utility. This password is called the DAK (Device Access Key) password. This password is printed on the powerline adapter itself.

You don't need to enter the DAK password for the powerline adapter directly connected to the computer running the utility (local powerline adapter), you only have to add the remote powerline adapters' passwords (those in your powerline network, but not directly connected to your computer).

## 4.2 Starting the Configuration Utility

In Windows, to launch the **ZyXEL PLA Series Configuration** utility simply double click on the utility icon on your desktop.

**Figure 11** ZyXEL PLA Series Configuration Utility Icon (Windows)



Alternatively, start the utility by browsing to it from the start menu. Click **Start > Programs > ZyXEL PLA Series Configuration > PLA Series Configuration**.

In Mac OS X, open the **Applications** folder and double-click the **PLA Utility** icon.



**Figure 12** ZyXEL PLA Series Configuration Utility Icon (Mac)



## 4.3 Network Info Screen

Use the **Network Info** screen to see the rates at which a specific PLA is communicating with other powerline adapters on your powerline network.

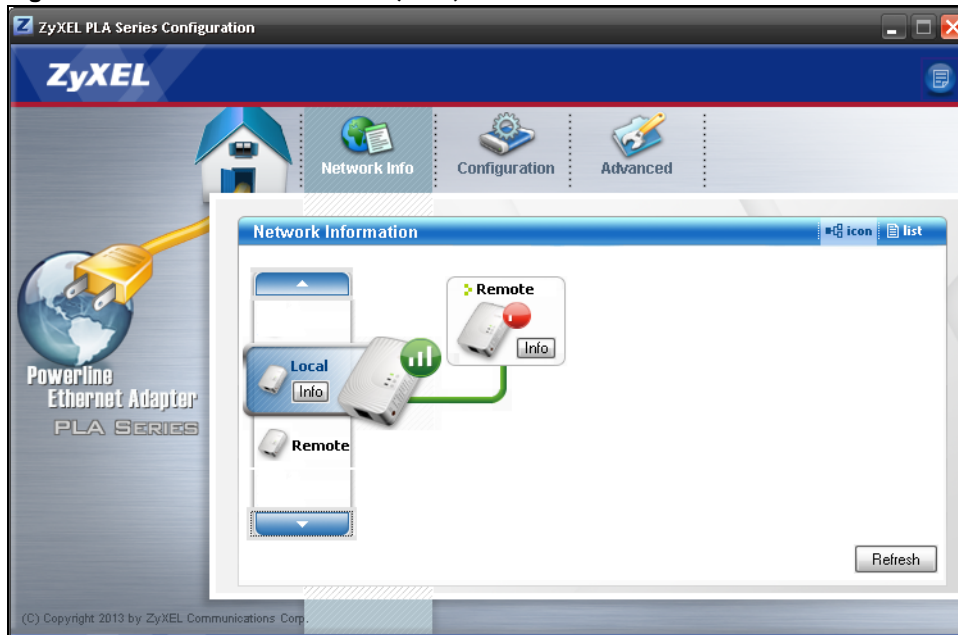




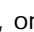
You can select to view the connection status represented by icons (  ) or view transmission/receiving rates in a list (  ).

### 4.3.1 Icon View

Use the up/down arrow or just click a device icon at the left side to select a powerline adapter in your network. The screen shows you the network connection status of the selected device. Click **Refresh** to update the screen immediately.

**Figure 13** Network Info Screen (Icon)

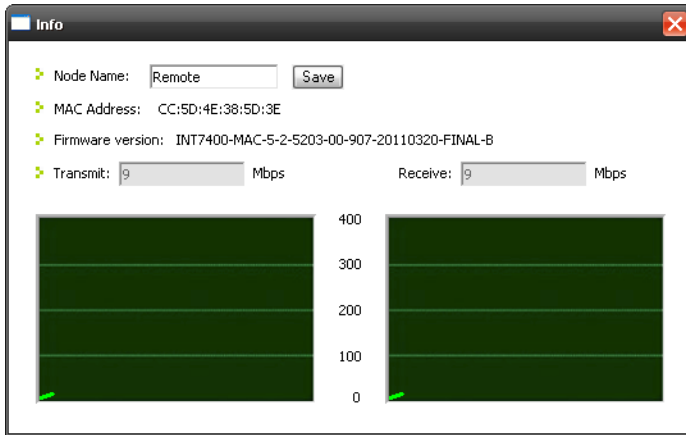


The connection status icon ( , , or  ) indicates the current data rate of the powerline adapter, and is equivalent to the HomePlug LED. See [Chapter 1 on page 8](#) for more information.

In this mode, you can click a device's **Info** button to open a screen, where you can change the device's descriptive name that displays in this screen and view its MAC address and firmware version. The **Info** screen also shows you how fast the selected powerline adapter sent information to or receive information from this device. For example, if the **Local** powerline adapter is selected, a **Remote** powerline adapter's **Info** screen also displays the rates of transmission from the

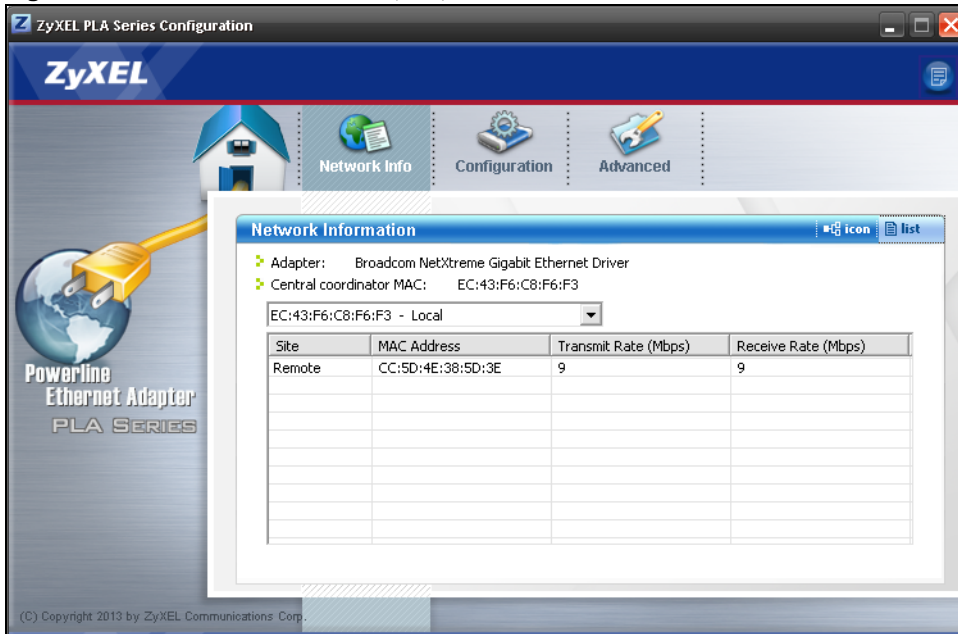
powerline adapter connected to the computer running the configuration utility to all the **Remote** powerline adapters.

**Figure 14** Network Info Screen (Icon) > Info



### 4.3.2 List View

**Figure 15** Network Info Screen (List)



The following table describes the labels in this screen.

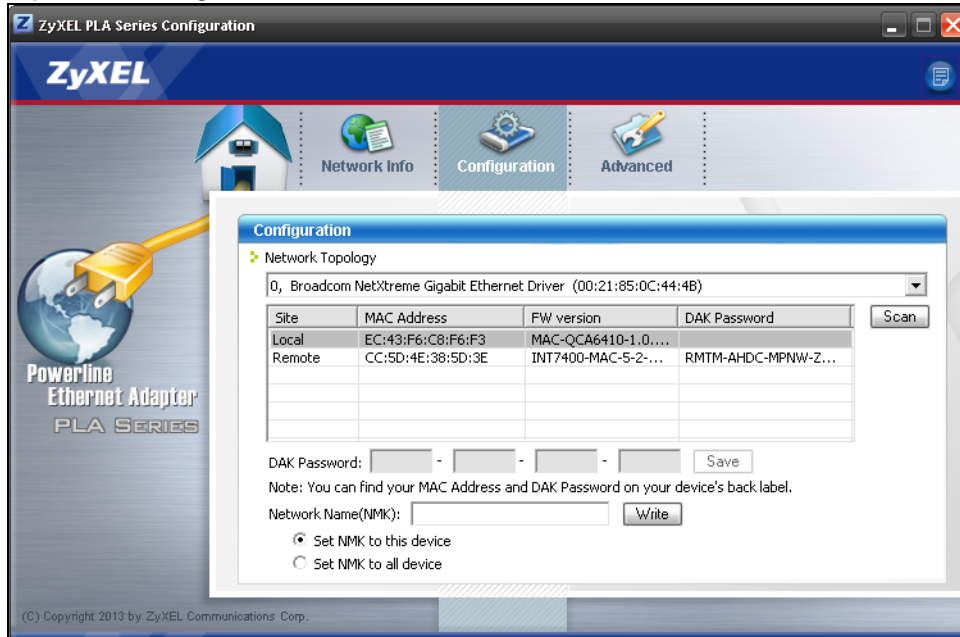
**Table 9** Network Info Screen (List)

LABEL	DESCRIPTION
Adapter	This field identifies which powerline network information is displayed. Different powerline networks are identified by the Ethernet interface (network card) connected directly to the PLA. Typically there is only one connection, however, if your computer has two network cards and both are connected to a PLA, then you have two powerline networks.
Central Coordinator MAC	The Central Coordinator of the powerline network is the powerline adapter which keeps track of which devices are part of the network as well as synchronizes communication within the powerline network. If the Central Coordinator is removed from the powerline network then another powerline adapter takes its place. This field displays the MAC address of the PLA which is the Central Coordinator of the powerline network. The powerline adapters in your powerline network automatically select the Central Coordinator.
<p>Select a powerline adapter from the drop-down box.</p> <p>The information provided in the following table reflects transmission rate information about the powerline adapters which communicate in your powerline network.</p> <p>The powerline adapters listed in this table are all the powerline adapters in your powerline network except the selected powerline adapter. In other words, if the <b>Local</b> powerline adapter is selected, then this table will display the rates of transmission from the powerline adapter connected to the computer running the configuration utility to all the <b>Remote</b> powerline adapters.</p>	
Site	<p>This field displays:</p> <ul style="list-style-type: none"> <li>• <b>Local</b>, if it is the PLA directly connected to the computer running the configuration utility.</li> <li>• <b>Remote</b>, if it is a PLA in your powerline network but not directly connected to the computer running the configuration utility.</li> </ul>
MAC Address	This field displays the MAC address of your powerline adapter. The MAC address of your powerline adapter can be found by looking at the label on your device. It consists of six pairs of hexadecimal characters (hexadecimal characters are "0-9" and "a-f"). In the case of the PLA, this label is on the bottom of the device.
Transmit Rate (Mbps)	This field displays how fast information is sent from the selected powerline adapter to this powerline adapter. The rate is given in the following format: "application data transmission rate / raw data transmission rate". Application data reflects more accurately how fast devices are transmitting application relevant traffic (for example Internet Protocol (IP) traffic). Raw data refers to the whole payload of the packets transmitted across the powerline network.
Receive Rate (Mbps)	This field displays how fast information is received from the selected powerline adapter to this powerline adapter. The rate is given in the following format: "application data transmission rate / raw data transmission rate". Application data reflects more accurately how fast devices are transmitting application relevant traffic (for example Internet Protocol (IP) traffic). Raw data refers to the whole payload of the packets transmitted across the powerline network.

## 4.4 Configuration Screen

Use the **Configuration** screen to see which devices are recognized by your powerline network, to configure your PLA and to set up a secure powerline network by changing the powerline network name. This screen opens up when you launch the utility.

**Figure 16** Configuration Screen



The following table describes the labels in this screen.

**Table 10** Configuration Screen

LABEL	DESCRIPTION
Network Topology	Use this to select which powerline network information is displayed. Different powerline networks are identified by the Ethernet interface (network card) connected directly to the PLA. Typically there is only one connection, however, if your computer has two network cards and both are connected to a powerline device then you have two powerline networks.
The fields described below are used to identify the powerline adapters recognized on the powerline network. The configuration utility automatically updates this information every 10 seconds.	
Note: Only devices which share the same network name are displayed in this table.	
Site	This field displays <ul style="list-style-type: none"> <li><b>Local</b>, if it is identifying the powerline adapter directly connected to the computer running the configuration utility.</li> <li><b>Remote</b>, if it is a powerline adapter in your powerline network but not directly connected to the computer running the configuration utility.</li> </ul>
MAC Address	This is a read-only field which shows the MAC address of the powerline adapter you are configuring. You can find the MAC address of your PLA displayed on a sticker on the bottom of your device.
FW version	This is a read-only field which shows the firmware version of the powerline adapter in your network.
DAK Password	This is a read-only field which shows the DAK (Device Access Key) password of the remote powerline adapter.
Scan	Click <b>Scan</b> to refresh the information in the table (immediately).

**Table 10** Configuration Screen (continued)

LABEL	DESCRIPTION
DAK Password	<p>DAK (Device Access Key) password is used to verify that you are authorized to perform changes on a remote device. You can find the DAK password printed on a sticker on the bottom of your PLA.</p> <p>Select the remote powerline adapter you want to manage by clicking the MAC address which corresponds to it in the <b>MAC Address</b> column. Enter the <b>DAK Password</b> value and click <b>Save</b>.</p> <p><b>Note:</b> You must enter the DAK Password value exactly as it is printed on the label (all caps and with dashes "-").</p>
Network Name (NMK)	<p>The default network name (sometimes called a network password or network membership key (NMK)) of the PLA is "<b>HomePlugAV</b>". HomePlug compatible devices use the same network name to recognize and communicate with each other over the powerline network. If you change the network name of one device on the network, it will no longer be recognized as part of that network.</p> <p>If you change the network name, make sure you change the network name for all of the powerline adapters that you want to be part of your powerline network.</p> <p>The network name can be from 8 to 64 characters in length, using "A" ~ "Z", "a" ~ "z", "0" ~ "9"; spaces are not allowed.</p>
Set NMK to this device	<p>Select this to apply the NMK (entered in the field above) as the network name for the powerline adapter directly connected to the computer running the configuration utility.</p>
Set NMK to all devices	<p>Select this to apply the NMK (entered in the field above) as the network name for all powerline adapter detected by the utility.</p>
Write	<p>Click this to apply your changes. The new <b>Network Name</b> is applied to the selected powerline adapter.</p> <p><b>Note:</b> You must enter the correct DAK password for the selected remote powerline adapter before you can make changes to it.</p>

## 4.5 Advanced Screen

You can configure the powerline adapters on your network to give priority to network traffic depending on its importance. When you set the priority of a powerline adapter, you set how quickly messages FROM your powerline adapter are sent in your powerline network. Transmissions TO your powerline adapter do not receive any priority.

For example, if you have a file server on your home network to deliver music and movie files to computers in your home, you should set the priority of the powerline adapter connected to this server to **Medium**. If video traffic is delivered too slowly, quality problems may occur.

On the other hand, a powerline adapter attached to a printer should have a low priority setting since the slow delivery of messages will not affect the print job.

Similarly, if you want to prioritize any downloads from the Internet, set the priority on the powerline adapter attached to your Internet gateway to **High**.

Allocate priority settings based on application type as follows.

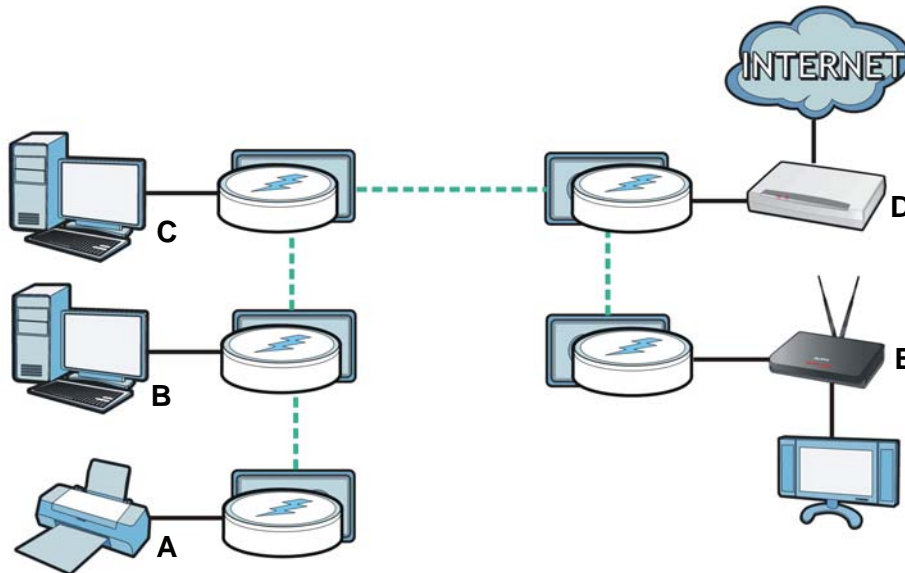
**Table 11** Priority Settings

PRIORITY LEVEL	APPLICATION
High	Voice Application
Medium	Video and Audio Applications
Normal	Data Applications
Low	Data Applications

The figure below shows an example powerline home network connected to the Internet.

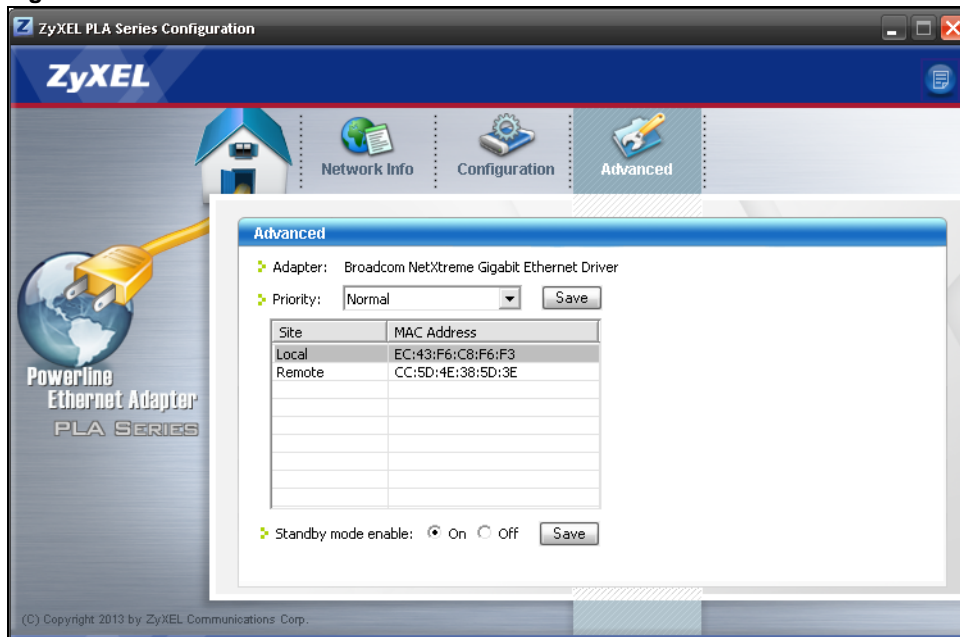
- Device A is a printer and does not handle traffic with high importance, so the powerline adapter connected to it can be set to low priority.
- Device B is a file server, delivering audio or movie files to other users on the network. The powerline adapter attached to it should have a medium setting.
- Device C, a home computer which connects to the Internet, can receive a normal priority setting as it usually sends simple requests for data. For example, when you surf the Internet, your computer sends requests to open web pages.
- Device D is a modem attached to the Internet. It should receive a high priority setting if you want faster downloading through your network.
- Although device E receives audio or movie files, it does not send a lot of traffic, so the powerline adaptor attached to it can be set to a low priority.

**Figure 17** Priority Settings



Use this screen to configure priority settings for traffic from the powerline adapters on your network.

**Figure 18** Advanced Screen




The following table describes the labels in this screen.

**Table 12** Advanced Screen

LABEL	DESCRIPTION
Adapter	This field identifies which powerline network information is displayed. Different powerline networks are identified by the Ethernet interface (network card) on your computer which is connected directly to a powerline adapter. Typically there is only one connection. However, if your computer has two network cards and both are connected to a powerline adapter, then you have two powerline networks.
Priority	Select a priority setting from the drop-down box for traffic FROM your selected device. The options, in order of importance, are <b>High</b> , <b>Medium</b> , <b>Normal</b> and <b>Low</b> .
Site	This field displays: <ul style="list-style-type: none"> <li><b>Local</b>, if it is the PLA directly connected to the computer running the configuration utility.</li> <li><b>Remote</b>, if it is a powerline adapter in your powerline network but not directly connected to the computer running the configuration utility.</li> </ul>
MAC Address	This is a read-only field which shows the MAC address of the powerline adapter you are configuring. You can find the MAC address of your PLA displayed on a sticker on the bottom of your device.
Standby mode enable	Select <b>On</b> to have the selected powerline adapter(s) go into standby mode when there is no Ethernet connection. Otherwise, select <b>Off</b> to have the adapter(s) never go into standby mode.
Save	Click this to apply your changes. The new <b>Priority</b> setting is applied to the selected powerline adapter.

## 4.6 About Screen


Use the **About** screen to view information regarding the configuration utility version of the PLA you are connected to. Click the  icon in the top right corner of the utility to view the **About** screen.

**Figure 19** About Screen



The following table describes the labels in this screen.

**Table 13** About Screen

LABEL	DESCRIPTION
Utility version	This field displays the software version of the configuration utility.
Released	This field displays the date when the utility was released.
Close	Click the  button in upper right corner to close the <b>About</b> window.



# Powerline Network Setup Tutorial

## 5.1 Overview

Use this tutorial to expand your existing powerline network.

After setting up your first home powerline network (instructions for that are in the Quick Start Guide for your ZyXEL powerline adapter) you may want to extend the network or create a new one by adding additional powerline adapters. This tutorial shows you the following.

- How to start up your new powerline adapter. You need to do this before you can begin the next sections.
- How to make your existing powerline network bigger by adding new powerline adapters.
- How to make a new network separate from your existing network with new powerline adapters.
- How to make a new, separate powerline network with the powerline adapters you have.

The tutorial uses the **ZyXEL PLA Series Configuration** utility to set up your powerline adapter.

If you haven't already installed the utility, see [Chapter 3 on page 22](#) for instructions. If you do not have the CD with the utility, the utility software is also available for download at [www.zyxel.com](http://www.zyxel.com). Navigate to the powerline products section of the ZyXEL website to find this software. Follow the instructions provided by the software to install it on your computer.

See the product specifications in the User's Guide for a list of hardware and software compatible with the utility.

Note: The PLA in this tutorial is an example only. Your powerline adapter may be different.

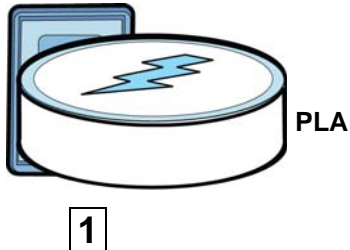
## 5.2 Important Terms

Network Name	The network name allows a powerline adapter to connect with other powerline adapters that have the same network name. It provides security for your powerline network. The network name uses English letters or numbers, from 8 to 64 characters long, with no spaces allowed.
DAK Password	DAK = Device Access Key.  The DAK Password lets you access the powerline adapter. You can find the DAK Password on a label on your powerline device.

## 5.3 Accessing Your Powerline Adapter

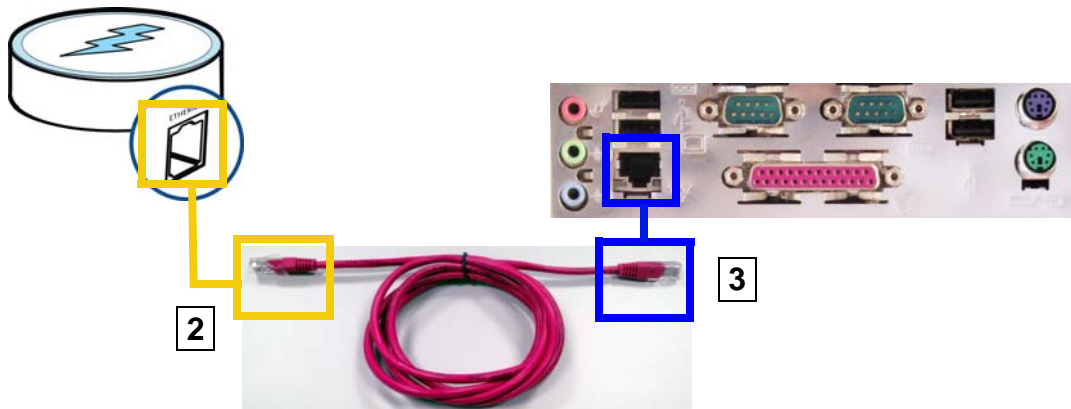
- 1 Plug the powerline adapter you want to add to your network into a power socket and, if needed, switch the power socket on.

**Figure 20** Plug Your Powerline Adapter into a Power Socket



- 2 Connect the powerline adapter to your computer.
- 3 Use a LAN or Ethernet cable (shown below) to connect the LAN or Ethernet port on your adapter to the same kind of port on your computer.

**Figure 21** Connect Your Powerline Adapter to a Computer



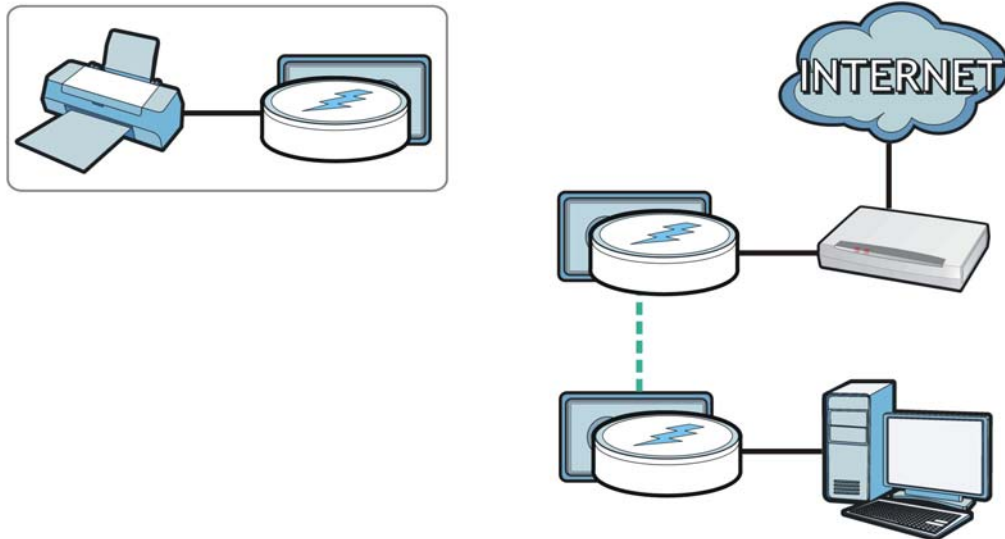
- 4 Open the **ZyXEL PLA Series Configuration** utility on your computer. See [Section 4.2 on page 32](#) for how to launch the utility.
- 5 You are now ready to extend your powerline network or set up a second network.
  - See [Section 5.4 on page 42](#) to add a new powerline adapter to your network.
  - See [Section 5.5 on page 44](#) to set up a second network with your new adapters.
  - See [Section 5.6 on page 46](#) to set up a second network with your existing adapters.

## 5.4 Adding a Powerline Adapter

This section shows you how to add a new powerline adapter to expand your existing network.

The figure below shows the family computer with Internet access on a powerline network. Expand the network by adding a new powerline adapter connected to a printer.

**Figure 22** Add a Printer to Your Powerline Network



Note: You do not need to know the network name of the new adapter to add it to your network.

- 1 Connect your computer to the powerline adapter you want to add to your network and open the **ZyXEL PLA Series Configuration** utility (see [Section 5.3 on page 42](#)).
- 2 Go to the **Configuration** screen. On this screen in the **Site** column your new powerline adapter should appear as **Local** (A). Check the **Local** adapter's MAC address (B). It should match the MAC address listed on the label on the back of your powerline adapter.

**Figure 23** Adding a New Adapter

**Configuration**

Network Topology

0, Broadcom NetXtreme Gigabit Ethernet Driver (00:21:85:0C:44:4B)

Site	MAC Address	FW version	DAK Password
Local	EC:43:F6:C8:F6:F3	MAC-QCA6410-1.0....	

DAK Password: - - - - Save

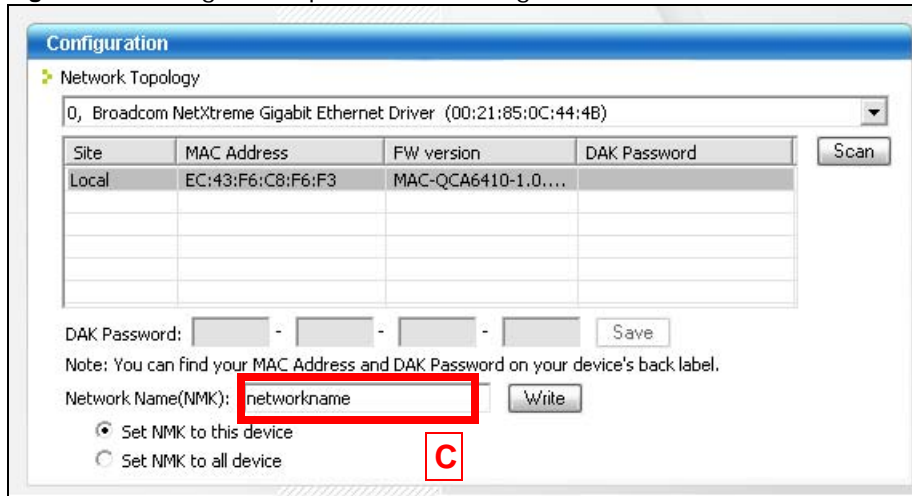
Note: You can find your MAC Address and DAK Password on your device's back label.

Network Name(NMK): Write

Set NMK to this device  
 Set NMK to all device

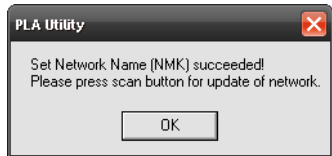
- 3 Select your adapter by selecting **Local** and type the network name for your existing network in the **Network Name** field (C).

**Figure 24** Adding an Adapter to an Existing Network



- 4 Click **Write** and click **OK** on the pop-up.

**Figure 25** Network Name Pop-up



- 5 Your new adapter will now have the same **Network Name** as your existing network and so has now joined your existing network.
- 6 Connect the adapter to the device you want to add to the network, for example, your Internet refrigerator in the kitchen.
- 7 Plug the adapter's power cord into a power outlet and, if required, switch the power outlet on.
- 8 Repeat this procedure for all additional powerline adapters that you want to add to your existing or new powerline network.

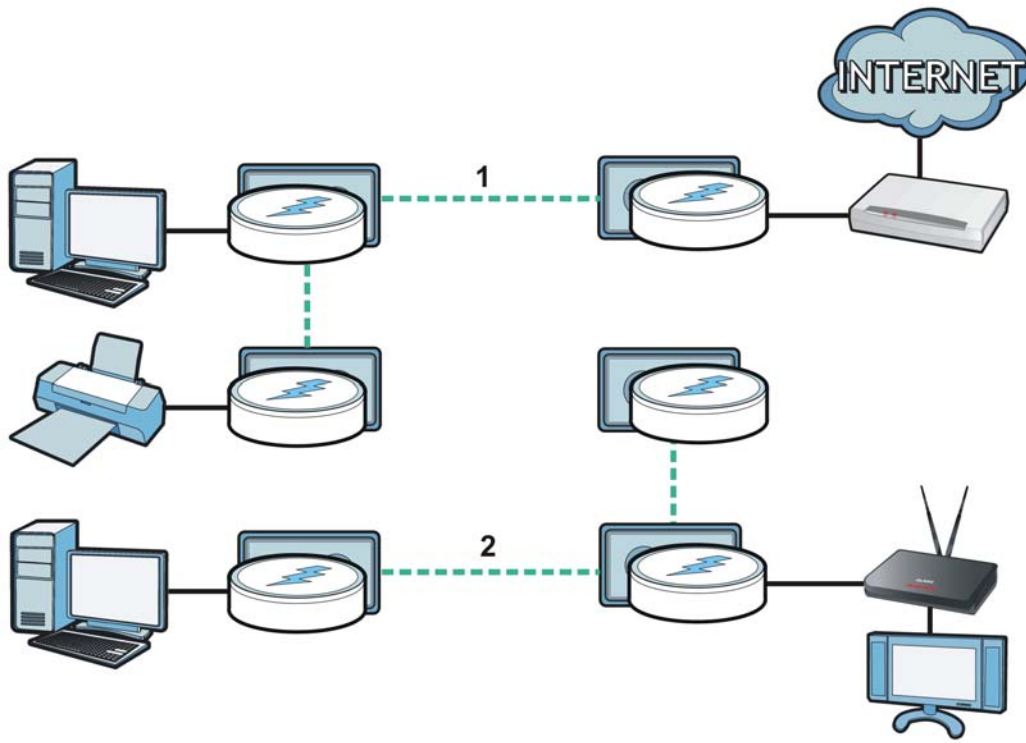
## 5.5 Setting Up a New Network with a New Adapter

This section shows you how to use your new powerline adapters to set up a new powerline network separate to your existing network.

The figure below shows two powerline networks in a house. The first network (1) shows the home computer connected to a printer and access to the Internet. The second network (2) has no

Internet access but with a media adapter such as the ZyXEL DMA-1100P you can use your TV to watch movies and play games which are stored on a computer.

**Figure 26** Add New Adapters to Make a Second Network



- 1 Connect your new powerline adapter and open the configuration utility as shown in [Section 5.5 on page 44](#). The screen shown below appears.
- 2 Type a **Network Name** that is different from the **Network Name** for your existing network. Make sure you use the same new **Network Name** for all new adapters you want to add to your new network.

**Figure 27** Making a New Network with the New Adapter

Site	MAC Address	FW version	DAK Password
Local	EC:43:F6:C8:F6:F3	MAC-QCA6410-1.0....	

DAK Password: [ ] - [ ] - [ ] - [ ] Save

Note: You can find your MAC Address and DAK Password on your device's back label.

Network Name(NMK): NEWnetworkname Write

Set NMK to this device  
 Set NMK to all device

- 3 After you have set up a new network, you are ready to connect each powerline adapter on your new network to devices, for example, a computer or a games console.

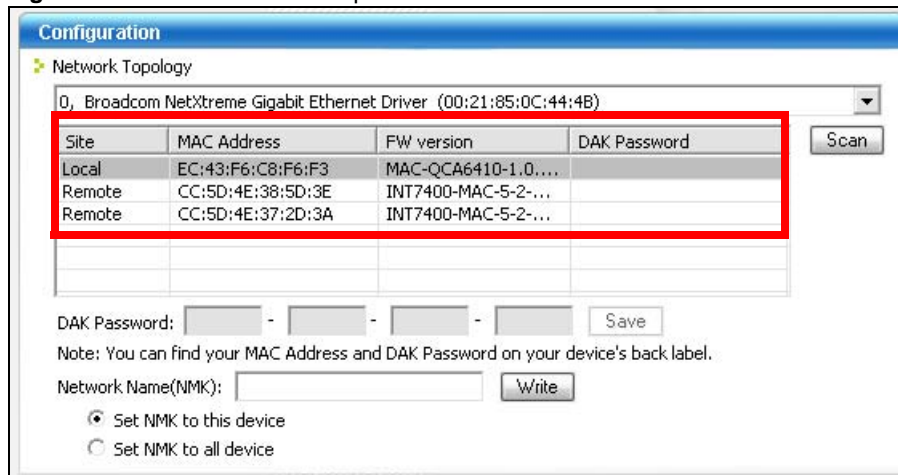
## 5.6 Splitting a Network into Two Networks

This section shows you how to split your existing network into two networks. This is useful if you want to set up a second powerline network in your home, for example, in your study connecting a laptop and printer. See [Figure 26 on page 45](#) for an example.

To set up your existing powerline network you had to set each powerline adapter with the same network name. To create a second (separate) powerline network, configure the PLAs you want to add to the second network with a new network name.

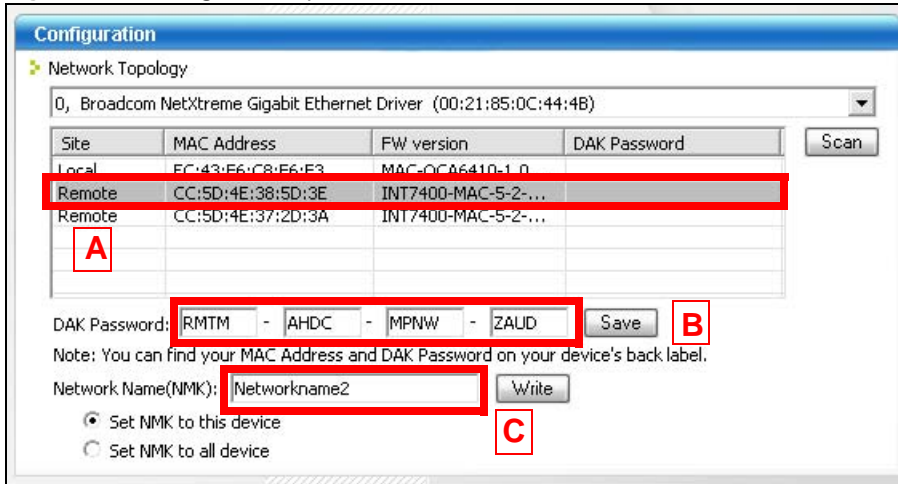
- 1 Connect a powerline adapter to your computer and open the **ZyXEL PLA Series Configuration** utility (see [Section 5.3 on page 42](#)).
- 2 The utility should open to the configuration tab as shown below. A list of powerline adapters on your network displays. These adapters all have the same network name as the adapter you are connected to. The adapter you are connected to will appear as **Local** in this table. All others are listed as **Remote**.

**Figure 28** Local/Remote Adapters on a Powerline Network



- 3 To set up a new powerline network, type the **DAK Password** and change the **Network Name** on all powerline adapters you wish to add to your network.
  - Look for the **DAK Password** on a label on your powerline adapter. The **DAK Password** lets you access the adapter.
  - Select the **Remote** adapter you want to add (A) and type the **DAK Password** in the **DAK Password** field (B).
  - Then type the new network name in the **Network Name** field (C).

Figure 29 Adding an Adapter to Your New Network

4 Click **Save**.

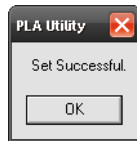
- If you do not type the **DAK password** or type it incorrectly the following pop-up appears. Click **OK** and type the **DAK Password** correctly in the **DAK Password** field.

Figure 30 Incorrect DAK or No DAK



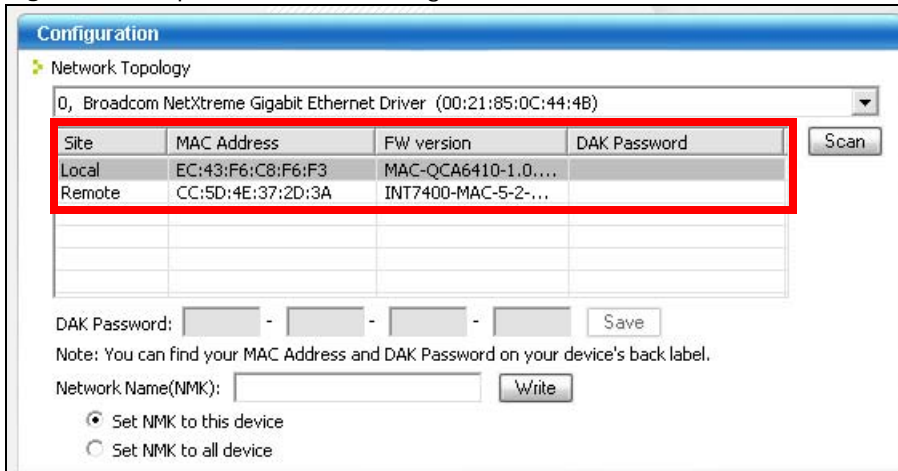
- If you have correctly entered the **DAK Password**, click **OK** on the pop-up.

Figure 31 Correct DAK



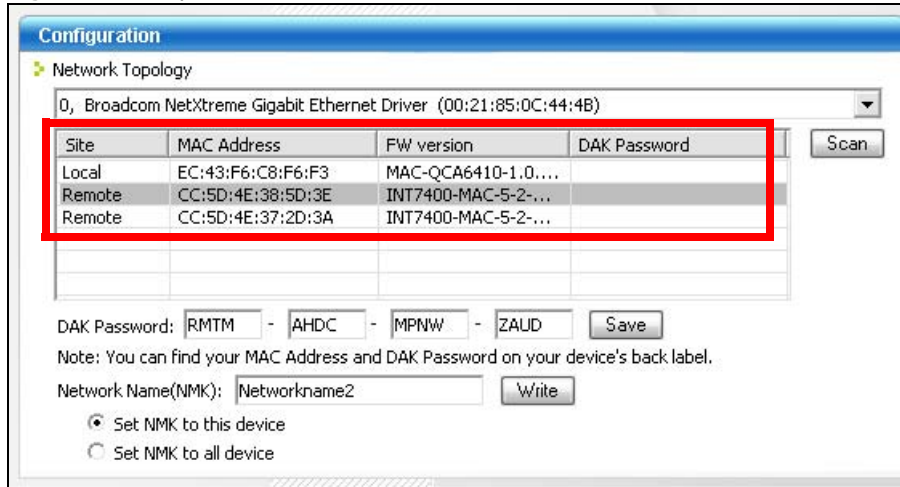
## 5 The adapter will disappear from the table of your existing network.

Figure 32 Adapters on Your Existing Network



- 6 Go back to step 3 in this section to set the same, new **Network Name** for all remote adapters you want to add to your new network.
- 7 Check you have added the adapters correctly by changing the network name for the local adapter. All adapters with the new **Network Name** now appear in the list of adapters on your network. These adapters are now part of your new network.

**Figure 33** Adapters on a New Powerline Network



- If you want to access any of your new powerline networks using the **ZyXEL PLA Series Configuration** utility, change the **Network Name** on your local adapter to the network name for the network you want to access. The adapters on that network will then display in the adapter table, allowing you to select and configure each one.

## 5.7 Troubleshooting

The HomePlug (🏠) LED (light) should light up on your adapter when it successfully connects to other adapters on your network. If it does not, try the following measures.

- Make sure the adapter is plugged in to a power socket and the power socket is turned on.
- Check you have entered the correct network name for your network.
- Check your powerline adapter is connected to the same electrical circuit as other powerline adapters on your network.



# Troubleshooting

This chapter offers some suggestions to solve problems you might encounter.

## 6.1 Power and Light Problems

---

The PLA does not turn on. None of the lights turn on.

---

- 1 Disconnect and re-connect the PLA.
- 2 Remove the powerline adapter from the outlet. Then connect an electrical device that you know works into the same power outlet. This checks the status of the power outlet.
- 3 If the problem continues, contact the vendor.

---

The ETHERNET light does not turn on.

---

- 1 Check the hardware connections. See the Quick Start Guide.
- 2 Inspect your cables for damage. Contact the vendor to replace any damaged cables.
- 3 Check the Ethernet adapter on your computer and make sure it's enabled and working properly.
- 4 If the PLA is connected to an Ethernet switch or router, make sure the device is working correctly, and that the LAN network is working and configured correctly as well.

---

The HomePlug light does not turn on.

---

- 1 Use the **ZyXEL PLA Series Configuration** utility to detect all other HomePlug devices on your powerline network. Make sure that the network name (sometimes called the network password) is the same on all of your powerline adapters. See [Section 4.4 on page 36](#) for instructions on changing the network name.
- 2 Check the DAK password and MAC address for all powerline adapters are typed correctly in the utility. See [Section 4.4 on page 36](#) for instructions on checking the DAK and MAC address.

- 3 Make sure that all your powerline adapters are HomePlug AV compliant. Check the package it came in or ask your vendor. This PLA can not detect earlier versions of HomePlug powerline adapters such as HomePlug 1.0 or 1.0.1. (Although they can coexist on the same electrical wiring without interfering with each other.)
- 4 Make sure that the powerline adapters on your network are all on the same electrical wiring. Connect another powerline adapter into an outlet close to your PLA's power outlet. They are probably now on the same electrical wiring. Check the HomePlug (🏠) light. If it now lights up your powerline adapter was probably previously on separate electrical wiring. Ask an electrician for more information on the electrical wiring in your building.
- 5 Make sure that you do not have a power meter between powerline adapters. Powerline signals cannot pass this.

---

The **POWER** and HomePlug light blink at the same time.

---

- You have pressed the **RESET/ENCRYPT** button for more than three seconds. Try setting up a connection again, this time pressing the **RESET/ENCRYPT** buttons on both devices for less than three seconds.

## 6.2 Configuration Utility Problems

---

The **ZyXEL PLA Series Configuration** utility displays an error during installation.

---

- Make sure your computer is using the supported operating system. See [Section 3.1.1 on page 22](#) and/or [Section 3.2.1 on page 28](#) for more information.

---

The **ZyXEL PLA Series Configuration** utility does not display all or any of my devices.

---

- Inspect the LEDs on your PLA and make sure that the ETHERNET and HomePlug LEDs are on or blinking. See [Section 1.2 on page 8](#) for troubleshooting LED related problems.
- Check you are using the latest version utility. Earlier version utilities cannot communicate with PLAs using the latest firmware. If you do not have the latest utility, download it from the ZyXEL website.
- If you are running another tool such as the **Firmware Detection Tool**, the utility will not detect your local device.
- If your computer has more than one network interface card (NIC), make sure you select the right NIC to which the PLA is connected in the utility's **Configuration** screen.

## 6.3 Powerline Problems

---

### The signal on my powerline network is weak.

---

- 1 Your powerline adapters may be connected to electrical surge protectors. Connect them to standard power outlets.
- 2 Your powerline adapters may be located close to large appliances such as refrigerators or air-conditioners that cause interference with the powerline signal. Move the adapters further away from such appliances to reduce interference.
- 3 Your powerline adapters may be placed close to electrical devices such as electrical insect-killers which produce radio waves. These may interfere with the powerline signals. Move the adapters further away from such electrical devices.
- 4 Your wiring may be old and/or low quality or with a long wiring path.

## 6.4 RESET/ENCRYPT Button Problems

This section applies only to PLAs with the **RESET/ENCRYPT** button. In this guide **RESET/ENCRYPT** refers to the **ENCRYPT** button in PLAs that have separate **RESET** and **ENCRYPT** buttons. Refer to [Table 1 on page 7](#) to see which models have separate **RESET** and **ENCRYPT** buttons.

---

### The HomePlug light is already on, but I haven't pressed the RESET/ENCRYPT button yet.

---

Your device has already connected to another powerline device. Press the **RESET/ENCRYPT** button for 5 to 8 seconds to release the connection.

---

### The POWER light does not blink when I press the RESET/ENCRYPT button.

---

- Check the device is on.
- Press the **RESET/ENCRYPT** button again, making certain you have pressed the button for 0.5 to 3 seconds.
- The POWER light on some powerline devices do not blink as part of the ENCRYPT process. Check your powerline device is a PLA.
- For PLA, you cannot use the **RESET/ENCRYPT** button when it is in standby mode. Connect the PLA to a computer/router then try again.

---

The POWER light blinks two times quickly then pauses, before repeating.

---

The ENCRYPT process has failed. Press the **RESET/ENCRYPT** button on both devices for 5 to 8 seconds, then try to reconnect.

---

The POWER lights on both devices blink when I press the RESET/ENCRYPT buttons, but the HomePlug light does not turn on.

---

- Ensure you have pressed the **RESET/ENCRYPT** button on both devices.
- Wait for about a minute while the devices set up a connection.
- If that does not work, try again with both devices connected to a power strip next to each other. If they now connect, then the devices were not on the same electrical circuit before.

---

The POWER lights on both devices blink, then many lights blink and the HomePlug light blinks red.

---

Do not worry, the connection process is proceeding normally.

---

The POWER lights on both devices finished blinking, but only one device's HomePlug light is on.

---

One device may have connected to a third powerline device. To check device A is connected to device B and not another device, disconnect device B from its power source. Device A's HomePlug (🏠) light will turn off if the connection is with Device B. Press the **RESET/ENCRYPT** button on both devices for 5 to 8 seconds, then try to reconnect, pressing the **RESET/ENCRYPT** button for 0.5 to 3 seconds on both devices.

---

I pressed the RESET/ENCRYPT button for 5 to 8 seconds, but the HomePlug light is still on.

---

The HomePlug light is on, indicating it is still connected to another powerline device. Try again, pressing the **RESET/ENCRYPT** button for 5 to 8 seconds.



# Customer Support

In the event of problems that cannot be solved by using this manual, you should contact your vendor. If you cannot contact your vendor, then contact a ZyXEL office for the region in which you bought the device. Regional websites are listed below (see also [http://www.zyxel.com/about\\_zyxel/zyxel\\_worldwide.shtml](http://www.zyxel.com/about_zyxel/zyxel_worldwide.shtml)). Please have the following information ready when you contact an office.

## Required Information

- Product model and serial number.
- Warranty Information.
- Date that you received your device.
- Brief description of the problem and the steps you took to solve it.

## Corporate Headquarters (Worldwide)

### Taiwan

- ZyXEL Communications Corporation
- <http://www.zyxel.com>

## Asia

### China

- ZyXEL Communications (Shanghai) Corp.
- ZyXEL Communications (Beijing) Corp.
- ZyXEL Communications (Tianjin) Corp.
- <http://www.zyxel.cn>

### India

- ZyXEL Technology India Pvt Ltd
- <http://www.zyxel.in>

### Kazakhstan

- ZyXEL Kazakhstan
- <http://www.zyxel.kz>

**Korea**

- ZyXEL Korea Corp.
- <http://www.zyxel.kr>

**Malaysia**

- ZyXEL Malaysia Sdn Bhd.
- <http://www.zyxel.com.my>

**Pakistan**

- ZyXEL Pakistan (Pvt.) Ltd.
- <http://www.zyxel.com.pk>

**Philippines**

- ZyXEL Philippines
- <http://www.zyxel.com.ph>

**Singapore**

- ZyXEL Singapore Pte Ltd.
- <http://www.zyxel.com.sg>

**Taiwan**

- ZyXEL Communications Corporation
- <http://www.zyxel.com>

**Thailand**

- ZyXEL Thailand Co., Ltd
- <http://www.zyxel.co.th>

**Vietnam**

- ZyXEL Communications Corporation-Vietnam Office
- <http://www.zyxel.com/vn/vi>

**Europe****Austria**

- ZyXEL Deutschland GmbH
- <http://www.zyxel.de>

**Belarus**

- ZyXEL BY
- <http://www.zyxel.by>

## **Belgium**

- ZyXEL Communications B.V.
- <http://www.zyxel.com/be/nl/>

## **Bulgaria**

- ZyXEL България
- <http://www.zyxel.com/bg/bg/>

## **Czech**

- ZyXEL Communications Czech s.r.o
- <http://www.zyxel.cz>

## **Denmark**

- ZyXEL Communications A/S
- <http://www.zyxel.dk>

## **Estonia**

- ZyXEL Estonia
- <http://www.zyxel.com/ee/et/>

## **Finland**

- ZyXEL Communications
- <http://www.zyxel.fi>

## **France**

- ZyXEL France
- <http://www.zyxel.fr>

## **Germany**

- ZyXEL Deutschland GmbH
- <http://www.zyxel.de>

## **Hungary**

- ZyXEL Hungary & SEE
- <http://www.zyxel.hu>

## **Latvia**

- ZyXEL Latvia
- <http://www.zyxel.com/lv/lv/homepage.shtml>



**Lithuania**

- ZyXEL Lithuania
- <http://www.zyxel.com/lt/lt/homepage.shtml>

**Netherlands**

- ZyXEL Benelux
- <http://www.zyxel.nl>

**Norway**

- ZyXEL Communications
- <http://www.zyxel.no>

**Poland**

- ZyXEL Communications Poland
- <http://www.zyxel.pl>

**Romania**

- ZyXEL Romania
- <http://www.zyxel.com/ro/ro>

**Russia**

- ZyXEL Russia
- <http://www.zyxel.ru>

**Slovakia**

- ZyXEL Communications Czech s.r.o. organizacna zlozka
- <http://www.zyxel.sk>

**Spain**

- ZyXEL Spain
- <http://www.zyxel.es>

**Sweden**

- ZyXEL Communications
- <http://www.zyxel.se>

**Switzerland**

- Studerus AG
- <http://www.zyxel.ch/>

### **Turkey**

- ZyXEL Turkey A.S.
- <http://www.zyxel.com.tr>

### **UK**

- ZyXEL Communications UK Ltd.
- <http://www.zyxel.co.uk>

### **Ukraine**

- ZyXEL Ukraine
- <http://www.ua.zyxel.com>

## **Latin America**

### **Argentina**

- ZyXEL Communication Corporation
- <http://www.zyxel.com/ec/es/>

### **Ecuador**

- ZyXEL Communication Corporation
- <http://www.zyxel.com/ec/es/>

## **Middle East**

### **Egypt**

- ZyXEL Communication Corporation
- <http://www.zyxel.com/homepage.shtml>

### **Middle East**

- ZyXEL Communication Corporation
- <http://www.zyxel.com/homepage.shtml>

## **North America**

### **USA**

- ZyXEL Communications, Inc. - North America Headquarters
- <http://www.us.zyxel.com/>

## Oceania

### Australia

- ZyXEL Communications Corporation
- <http://www.zyxel.com/au/en/>

## Africa

### South Africa

- Nology (Pty) Ltd.
- <http://www.zyxel.co.za>

# Legal Information

## Copyright

Copyright © 2014 by ZyXEL Communications Corporation.

The contents of this publication may not be reproduced in any part or as a whole, transcribed, stored in a retrieval system, translated into any language, or transmitted in any form or by any means, electronic, mechanical, magnetic, optical, chemical, photocopying, manual, or otherwise, without the prior written permission of ZyXEL Communications Corporation.

Published by ZyXEL Communications Corporation. All rights reserved.

## Disclaimers

ZyXEL does not assume any liability arising out of the application or use of any products, or software described herein. Neither does it convey any license under its patent rights nor the patent rights of others. ZyXEL further reserves the right to make changes in any products described herein without notice. This publication is subject to change without notice.

## Trademarks

Trademarks mentioned in this publication are used for identification purposes only and may be properties of their respective owners.

## Certifications

### Federal Communications Commission (FCC) Interference Statement

The device complies with Part 15 of FCC rules. Operation is subject to the following two conditions:

- This device may not cause harmful interference.
- This device must accept any interference received, including interference that may cause undesired operations.

This device has been tested and found to comply with the limits for a Class B digital device pursuant to Part 15 of the FCC Rules. These limits are designed to provide reasonable protection against harmful interference in a residential installation. This device generates, uses, and can radiate radio frequency energy, and if not installed and used in accordance with the instructions, may cause harmful interference to radio communications. However, there is no guarantee that interference will not occur in a particular installation.

If this device does cause harmful interference to radio/television reception, which can be determined by turning the device off and on, the user is encouraged to try to correct the interference by one or more of the following measures:

- 1 Reorient or relocate the receiving antenna.
- 2 Increase the separation between the equipment and the receiver.
- 3 Connect the equipment into an outlet on a circuit different from that to which the receiver is connected.
- 4 Consult the dealer or an experienced radio/TV technician for help.

### **CE-Konformität**

Das Produkt entspricht den grundlegenden Anforderungen der Richtlinie 1999/5/EG (R&TTE) sowie den übrigen einschlägigen Bestimmungen des FTEG und ist zum Betrieb in der EU und Schweiz vorgesehen. Das Produkt ist eine Einrichtung der Klasse A. Diese Einrichtung kann im Wohnbereich Funkstörungen verursachen; in diesem Fall kann vom Betreiber verlangt werden, angemessene Massnahmen durchzuführen.

### **Conformité CE**

Le produit satisfait aux exigences techniques de la directive 1999/5/CE (R&TTE) et est conçu pour être utilisé au sein de la Communauté européenne et en Suisse. Le produit fait partie de la classe A, ce qui signifie que son exploitation peut entraîner des bruits parasites dans les zones d'habitation; le cas échéant, l'exploitant peut être tenu de prendre des mesures appropriées pour remédier au dérangement.

### **Conformità CE**

Questo prodotto soddisfa le richieste tecniche della direttiva 1999/5/EG (R&TTE) ed è previsto per il funzionamento nella UE e in Svizzera. Il prodotto è dispositivo della classe A. Questo dispositivo può causare nel settore abitativo dei radiodisturbi.

In questo caso può essere richiesto al gestore di prendere opportune misure.

### **Notices**

Changes or modifications not expressly approved by the party responsible for compliance could void the user's authority to operate the equipment.

This Class B digital apparatus complies with Canadian ICES-003.

Cet appareil numérique de la classe B est conforme à la norme NMB-003 du Canada.

### **Viewing Certifications**

Go to <http://www.zyxel.com> to view this product's documentation and certifications.

## **ZyXEL Limited Warranty**

ZyXEL warrants to the original end user (purchaser) that this product is free from any defects in material or workmanship for a specific period (the Warranty Period) from the date of purchase. The Warranty Period varies by region. Check with your vendor and/or the authorized ZyXEL local

distributor for details about the Warranty Period of this product. During the warranty period, and upon proof of purchase, should the product have indications of failure due to faulty workmanship and/or materials, ZyXEL will, at its discretion, repair or replace the defective products or components without charge for either parts or labor, and to whatever extent it shall deem necessary to restore the product or components to proper operating condition. Any replacement will consist of a new or re-manufactured functionally equivalent product of equal or higher value, and will be solely at the discretion of ZyXEL. This warranty shall not apply if the product has been modified, misused, tampered with, damaged by an act of God, or subjected to abnormal working conditions.

## Note

Repair or replacement, as provided under this warranty, is the exclusive remedy of the purchaser. This warranty is in lieu of all other warranties, express or implied, including any implied warranty of merchantability or fitness for a particular use or purpose. ZyXEL shall in no event be held liable for indirect or consequential damages of any kind to the purchaser.

To obtain the services of this warranty, contact your vendor. You may also refer to the warranty policy for the region in which you bought the device at [http://www.zyxel.com/web/support\\_warranty\\_info.php](http://www.zyxel.com/web/support_warranty_info.php).

## Registration

Register your product online to receive e-mail notices of firmware upgrades and information at [www.zyxel.com](http://www.zyxel.com) for global products, or at [www.us.zyxel.com](http://www.us.zyxel.com) for North American products.

## Safety Warnings

- Do NOT use this product near water, for example, in a wet basement or near a swimming pool.
- Do NOT expose your device to dampness, dust or corrosive liquids.
- Do NOT store things on the device.
- Do NOT install, use, or service this device during a thunderstorm. There is a remote risk of electric shock from lightning.
- Connect ONLY suitable accessories to the device.
- Do NOT open the device or unit. Opening or removing covers can expose you to dangerous high voltage points or other risks. ONLY qualified service personnel should service or disassemble this device. Please contact your vendor for further information. Make sure to connect the cables to the correct ports.
- Place connecting cables carefully so that no one will step on them or stumble over them.
- Always disconnect all cables from this device before servicing or disassembling.
- Use ONLY an appropriate power source for your device.
- Connect the powerline adapter to the right supply voltage (for example, 110V AC in North America or 230V AC in Europe).
- Do NOT allow anything to rest on the powerline adapter and do NOT place the product where anyone can walk on the powerline adapter.
- Do NOT use the device if the powerline adapter is damaged as it might cause electrocution.
- If the powerline adapter is damaged, remove it from the power outlet.
- Do NOT attempt to repair the powerline adapter. Contact your local vendor to order a new one.
- Do not use the device outside, and make sure all the connections are indoors. There is a remote risk of electric shock from lightning.
- Do NOT obstruct the device ventilation slots, as insufficient airflow may harm your device.
- If you wall mount your device, make sure that no electrical lines, gas or water pipes will be damaged.
- This power unit is intended to be correctly orientated in a vertical or floor mount position.
- You must plug in the PLA vertically, so that the ventilation holes are not facing up or down.

Your product is marked with this symbol, which is known as the WEEE mark. WEEE stands for Waste Electronics and Electrical Equipment. It means that used electrical and electronic products should not be mixed with general waste. Used electrical and electronic equipment should be treated separately.



## A

about screen [40](#)  
AC Pass-Through [7](#)  
Advanced Encryption Standard, see AES [10](#)  
AES [12, 31](#)  
AES (Advanced Encryption Standard) [10](#)  
applications [7](#)

## C

certifications [60](#)  
    notices [61](#)  
    viewing [61](#)  
configuration screen [36](#)  
configuration utility [10](#)  
connections overview [11](#)  
contact information [54](#)  
copyright [60](#)  
customer support [54](#)

## D

DAK [12, 31, 36](#)  
DAK (Data Access Password) [12](#)  
Data Access Key [12](#)  
Data Access Password, see DAK [12](#)  
disclaimer [60](#)  
documentation  
    related [2](#)

## E

electrical and cable wiring [31](#)  
electrical circuit boundaries [31](#)

ENCRYPT Button [18](#)  
Encrypt Button [7](#)  
encryption [10, 31](#)

## F

FCC interference statement [60](#)

## G

Guide  
    Quick Start [2](#)

## H

HomePlug AV standard [7](#)

## I

installation  
    procedure [22, 28](#)  
InstallShield wizard [26](#)  
introduction [7](#)

## L

LED [49](#)  
    ETHERNET [9](#)  
    HomePlug [9](#)  
    POWER [8, 9](#)  
local vs. remote adapter [36](#)



## M

- MAC address [36](#)
- management
  - multiple networks [12](#)
  - overview [31](#)
- managing the device
  - using the utility
- maximum PHY rate [7](#)
- multiple networks [12](#)

## N

- network example [31](#)
- network information [32](#)
- Network Name [12](#)
- network name [18](#)

## O

- other documentation [2](#)

## P

- pass-through [7](#)
- passwords [31](#), [36](#), [37](#)
  - types of [12](#)
- PHY Rate [7](#)
- PLA Comparison [7](#)
- plug-and-play [31](#)
- power pass-through [7](#)
- Powerline Network
  - Adding Devices [14](#)
  - Creating multiple networks [17](#)
  - Removing Devices [16](#)
- priority settings [37](#)
  - application type [38](#)
  - priority levels [39](#)
- private network [12](#)
- problems and solutions [49](#)
- product registration [62](#)

## Q

- Quick Start Guide [2](#)

## R

- receive rate [32](#)
- registration
  - product [62](#)
- related documentation [2](#)
- RESET Button [19](#)
- Reset Button [7](#)
- RESET/ENCRYPT Button
  - Combination [17](#)
  - Manage [10](#)
  - Separate [18](#)

## S

- security [11](#), [12](#), [31](#)
  - passwords [12](#)
- standby mode (power saving mode) [10](#)
- starting the utility [32](#)

## T

- trademarks [60](#)
- transfer rates [10](#)
- transmit rate [32](#)
- troubleshooting [49](#)

## U

- utility [10](#)
  - launching [32](#)

## W

- warranty [61](#)

note [62](#)

## Z

ZyXEL PLA Series Configuration [31](#)